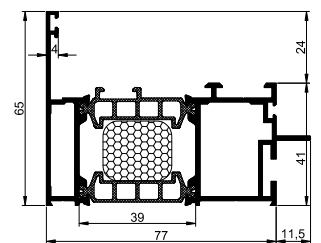
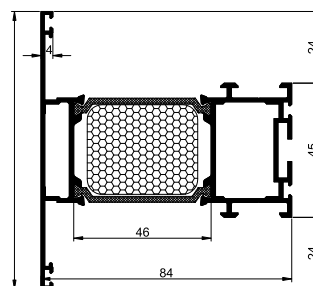
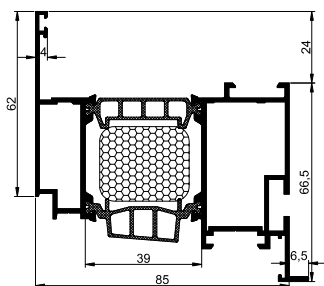
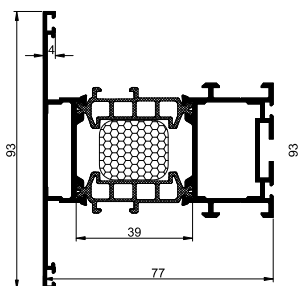


PREGLED SISTEMA/SYSTEM OVERVIEW/ОБЗОР СИСТЕМЫ

LINEAL



DESIGNED AND MANUFACTURED BY TEHNOMARKET



LINEAL – linija novih standarda u aluminijumu

LINEAL je nova linija Tehnomarket sistema, namenjena izradi aluminijumskih prozora i vrata sa termoprekidom, čija je osnovna ideja da odgovori novim i zahtevnijim standardima za izgradnju objekata u budućnosti.

Sistem je unapređenih performansi, koje krajnjem korisniku pružaju niz povoljnosti u eksploataciji:

- **trajnost** garantovana upotrebom primarnog aluminijuma za proizvodnju profila i ostalih materijala za izradu pratećeg pribora najvišeg kvaliteta
- **moderan** dizajn nastao kao odgovor na zahteve savremenih projekatana u vidu svedenih i pročišćenih formi izkazanih kroz ravne linije kontura štoka i krila, sa ukupnom vidnom visinom rama od 106 do 186 mm
- **energetska** efikasnost postignuta kao rezultat pravilno pozicioniranih i idealno dimenzionisanih osnovnih elemenata sistema: aluminijumskih profila, poliamidnih traka i EPDM zaptivki, sa osnovnim ciljem da se maksimalno redukuju toplotni gubici (za sistem THERM 77 moguće postići $U_w \approx 0,93 \text{ W/m}^2\text{K}$, a za W-THERM 104 $U_w \approx 0,84 \text{ W/m}^2\text{K}$)
- **ekonomičnost** proizlazi iz modularnosti sistema gde se, kombinovanjem osnovnih profila i malog broja pratećih komponenti, dobija čitav niz različitih podsistema širokog spektra karakteristika
- **raznolikost** ostvarena preko kombinatorike profila-poliamidi-drvo u 6 osnovnih podsistema:
 - ST 54** – aluminijumski sistem dubine ugradnje 54mm
 - PLUS 62** – aluminijumski sistem dubine ugradnje 62mm
 - TERM 77** – aluminijumski sistem dubine ugradnje 77mm
 - W-ST 81** – sistem aluminijum-drvo dubine ugradnje 81mm
 - W-PLUS 89** – sistem aluminijum-drvo dubine ugradnje 89mm
 - W-THERM 104** – sistem aluminijum-drvo dubine ugradnje 104mm

LINEAL – line of new standards in aluminium

LINEAL, the new line of Tehnomarket profile systems for aluminium doors and windows with thermal break, is an answer to the new and more demanding standards for modern construction.

System offers improved performance that provides a number of benefits to the final user:

- **durability** guaranteed by the use of primary aluminum for profile production and materials of the highest quality for the remaining accessories
- **modern** design created as response to contemporary designer's demand for reduced and purified forms expressed through the straight contour lines of outer frames and vents, with a total visible height of the frame from 106 to 186 mm
- **energy** efficiency as result of properly positioned and ideally dimensioned basic system elements: aluminum profiles, polyamide strips and EPDM seals, all working together to achieve minimal heat losses (system THERM 77 achieves $U_w = 0.93 \text{ W/m}^2\text{K}$, and W-THERM 104 $U_w = 0.84 \text{ W/m}^2\text{K}$)
- **usage efficiency** comes from system modularity which provides a number of different sub-systems with wide range of different performance levels, all by combining basic profiles and small number of accessories
- **diversity** is achieved through various compositions of profiles-polyamides-wood into 6 main subsystems:
 - ST 54** - aluminum system with installation depth of 54mm
 - PLUS 62** - aluminum system with installation depth of 62mm
 - TERM 77** - aluminum system with installation depth of 77mm
 - W-ST 81** – aluminum-wood system with installation depth of 81mm
 - W-PLUS 89** – aluminum-wood system with installation depth of 89mm
 - W-THERM 104** – aluminum-wood system with installation depth of 104mm

ЛИНЕАЛ - линия новых стандартов из алюминия

ЛИНЕАЛ это новая линия „Техномаркет“ система, предназначена для изготовления алюминиевых окон и дверей с термическим разделением. Основная идея заключается в ответах на новые и более требовательным стандартам для строительства в будущем.

Система имеет более высокую производительность, которое конечным пользователю предоставляет ряд преимуществ в эксплуатации:

- **долговечность** обеспечивается использованием первичного алюминия для производство профилей и других материалов для аксессуаров высокого качества
- **современный** дизайн создан в ответ на требования современных дизайнеров в виде очищенной форме выражений через пряме контурные линии рамой и створкой, общий видимый высоты рамы от 106 до 186 мм
- **энергоэффективность** достигается в результате правильно и совершенно расположением размерами основных элементов системы: алюминиевых профилей, полиамид полосы и EPDM прокладкой, с целью уменьшить максимальные потери тепла (для систему THERM 77 может быть достигнуто $U_w \approx 0.93 \text{ W/m}^2$, а для W-THERM 104 $U_w \approx 0.84 \text{ W/m}^2\text{K}$)
- **рентабельность** проистекает из модульности системы где, путем комбинирования базового профиля и небольшого количества вспомогательных компонентов, получает множество различных подсистемах широким диапазоном характеристик
- **разнообразие** достигнуто посредством комбинирования профилей-полиамид-дерево в 6 основных подсистем:
 - ST 54** - алюминиевая система глубиной монтажа 54 мм
 - PLUS 62** - алюминиевая система глубиной монтажа 62 мм
 - TERM 77** - алюминиевая система глубиной монтажа 77 мм
 - W-ST 81** - алюминий-дерево система глубиной монтажа 81 мм
 - W-PLUS 89** - алюминий-дерево система глубиной монтажа 89 мм
 - W-THERM 104** - алюминий-дерево система глубиной монтажа 104 мм

| LINEAL | ST 54 | PLUS 62 | THERM 77 | W-ST 81 | W-PLUS 89 | W-THERM 104 |
|--|--------------|----------------|-----------------|----------------|------------------|--------------------|
| profil / profile / профиль Uf (W/m2K) | 2.868 | 2.382 | 1.344 | 2.358 | 2.047 | 1.14 |
| prozor / window / окно Uw (W/m2K) | 1.67 | 1.25* | 0.93* | 1.52 | 1.13* | 0.87* |
| ispuna / glazing / остекление min-max (mm) | 8-32 | 8-40 | 23-55 | 18-38 | 26-46 | 41-61 |
| visina profila / profile height / высота профиля min-max (mm) | 106-186 | 106-186 | 106-186 | 106-132 | 106-132 | 106-132 |
| prozor / window окно | ● | ● | ● | ● | ● | ● |
| balkonska vrata / balcony door дверь балкона | ● | ● | ● | ● | ● | ● |
| ulazna vrata / entry door входная дверь | ● | ● | ● | | | |
| okov / hardware / механизм EURO 1 | ● | ● | ● | | | |
| okov / hardware / механизм EURO 16mm** | ● | ● | ● | | | |
| okov / hardware / механизм Tehnomarket | | | | ● | ● | ● |
| sigurnosni okovi / safety hardware / механизм без опасности Wk1,WK2 | ● | ● | ● | | | |

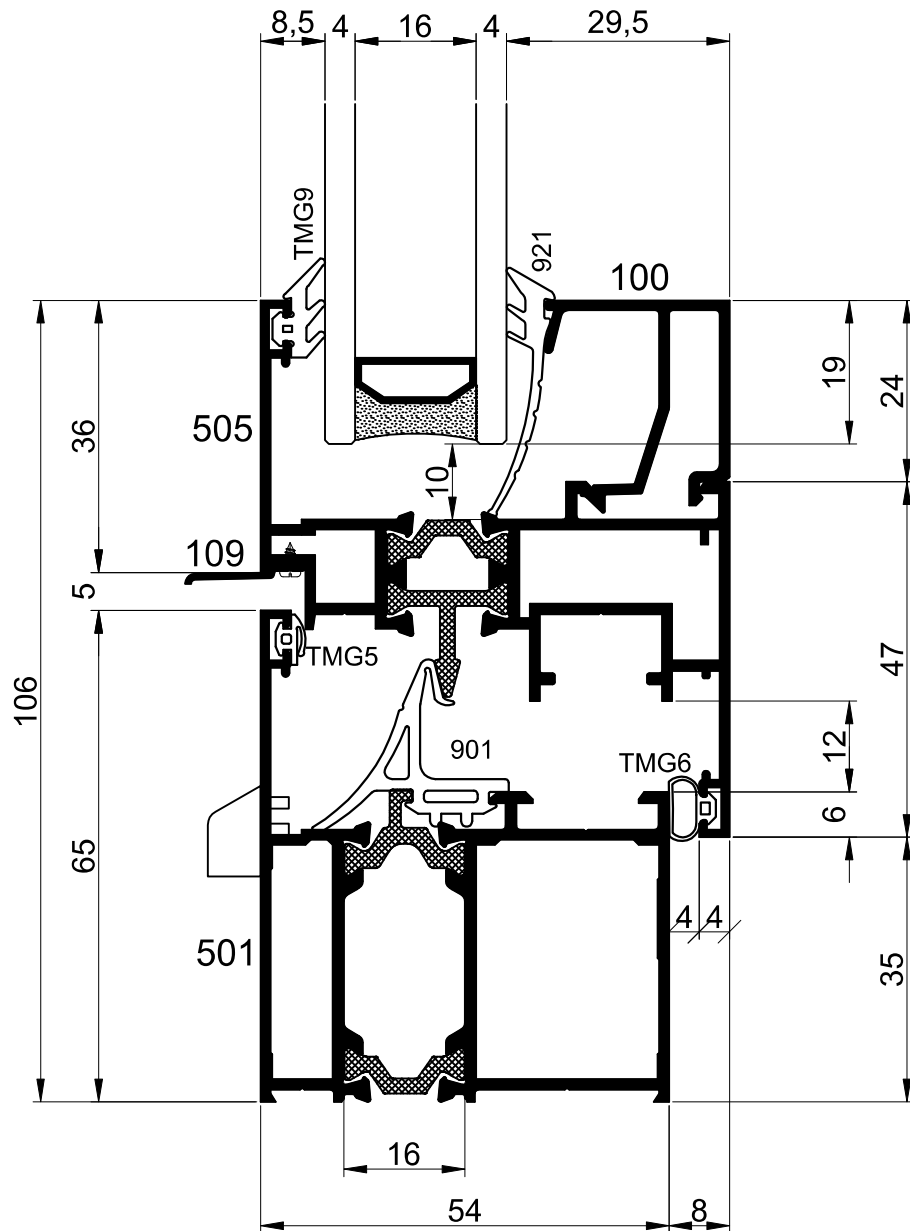
* staklo/glass/стекло Ug ≈ 0,6 W/m2K / EN ISO 100777-2

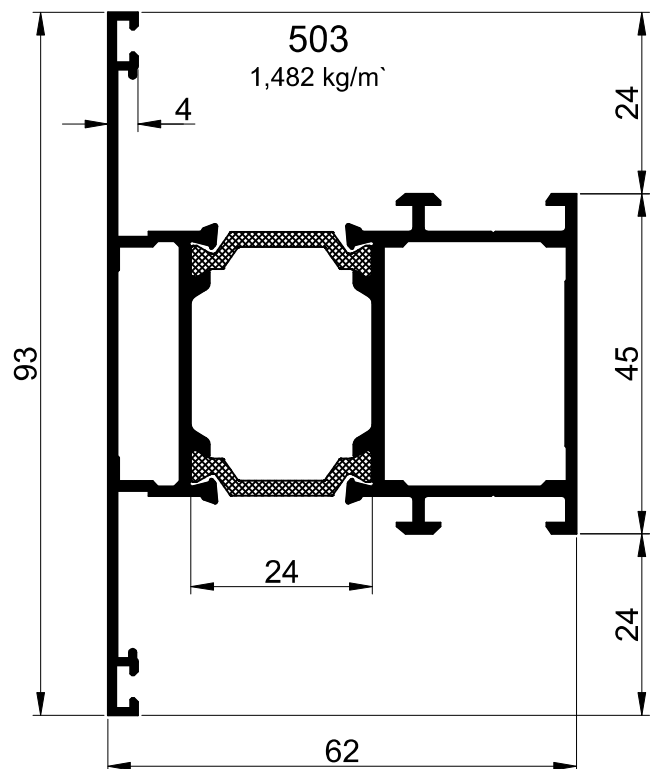
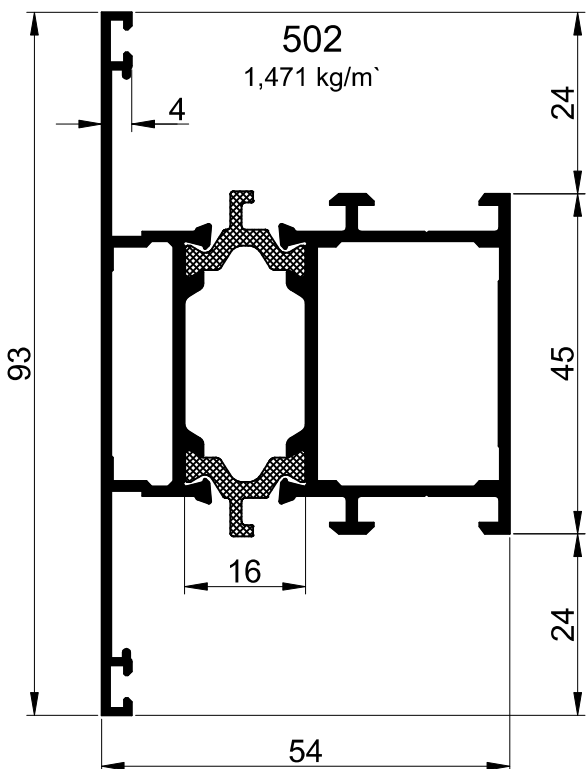
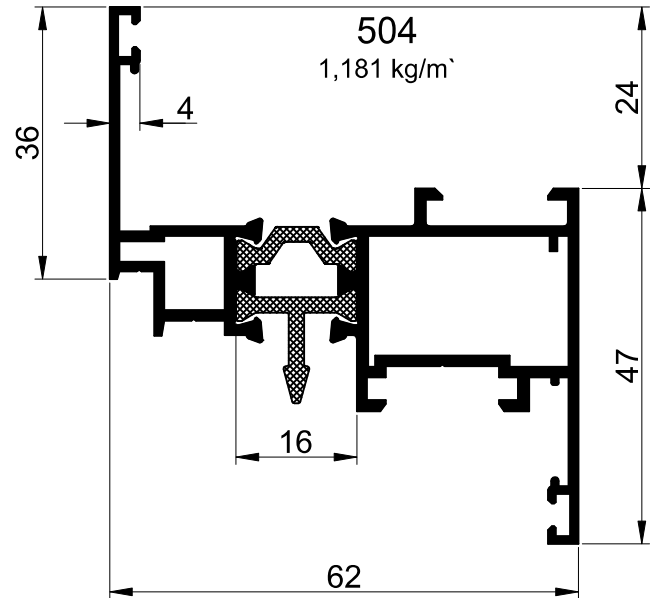
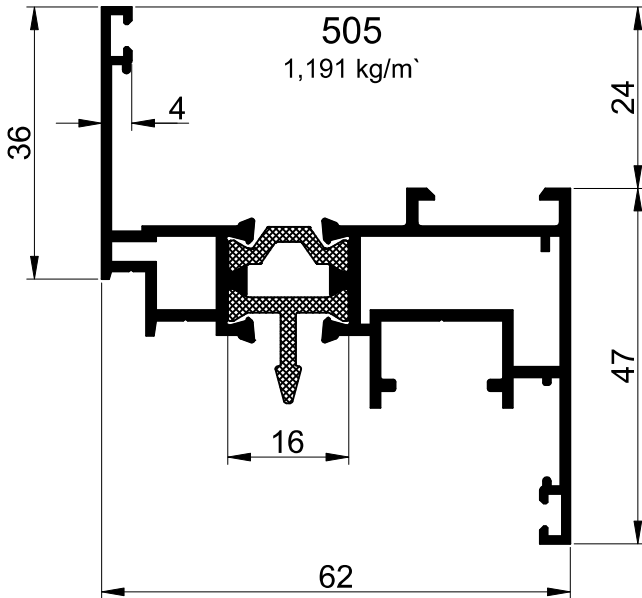
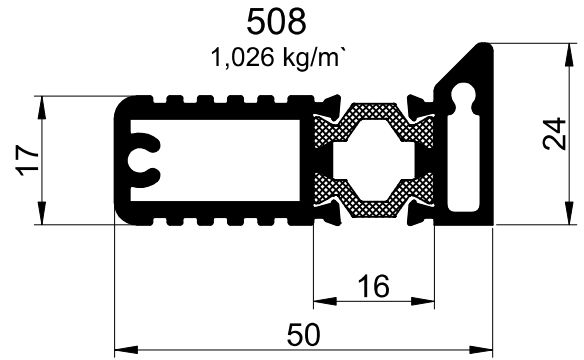
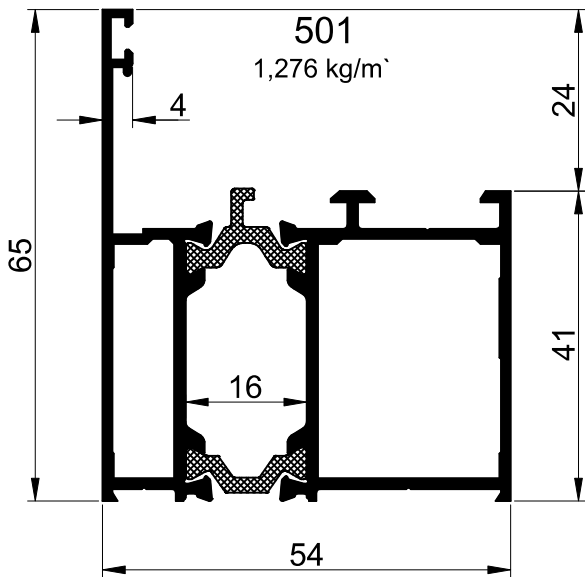
** okov / hardware / механизм 18mm

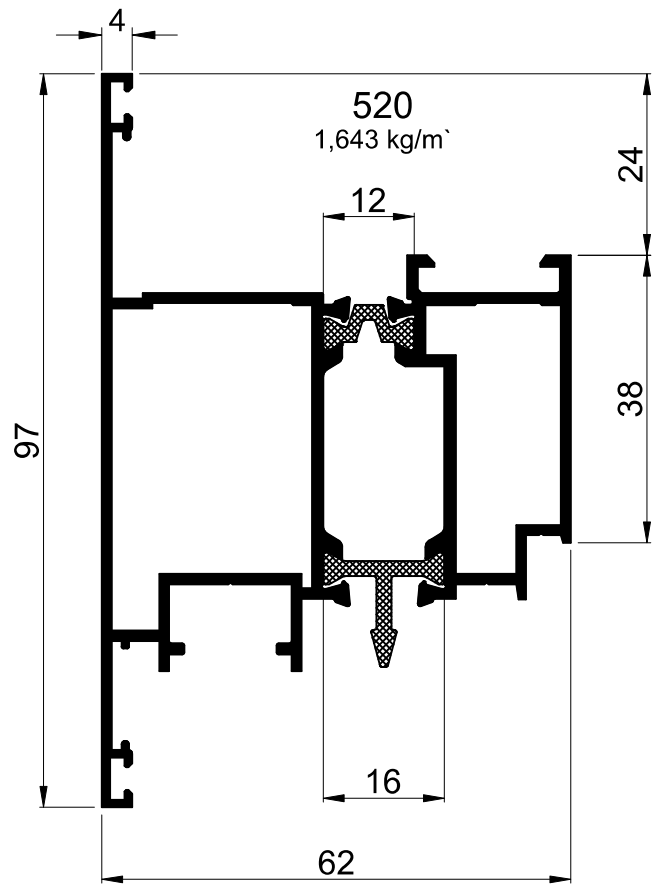
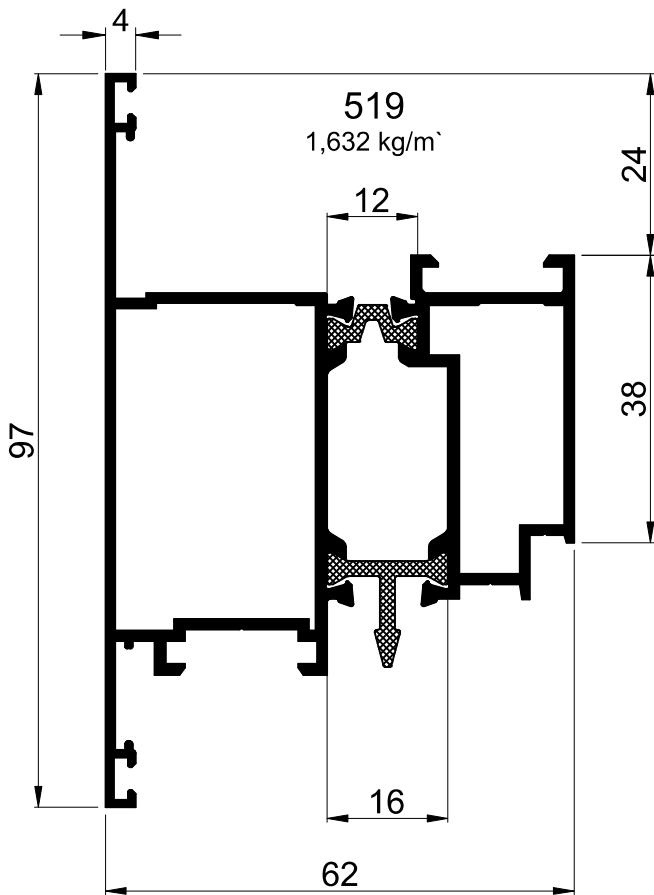
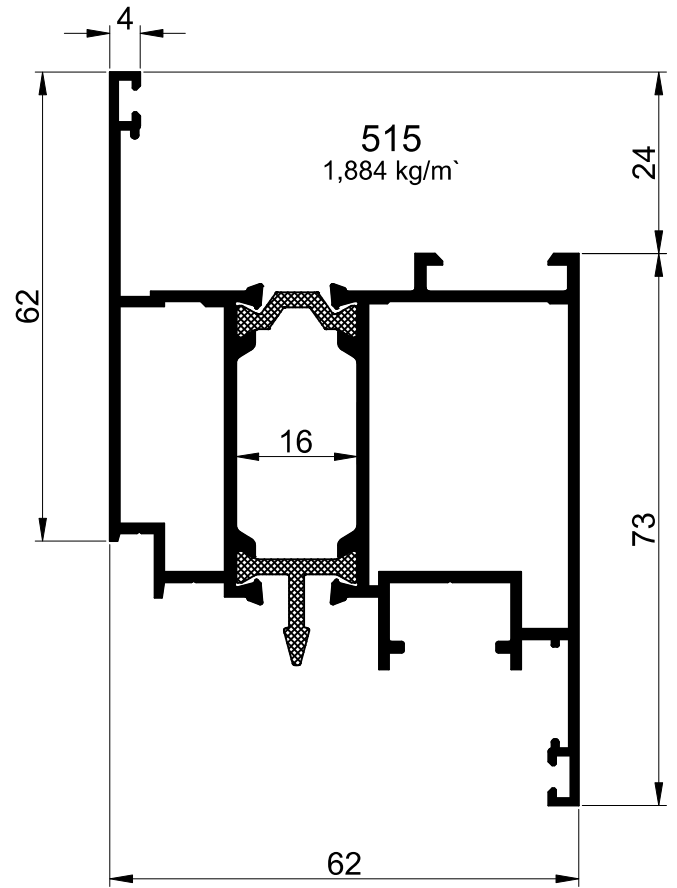
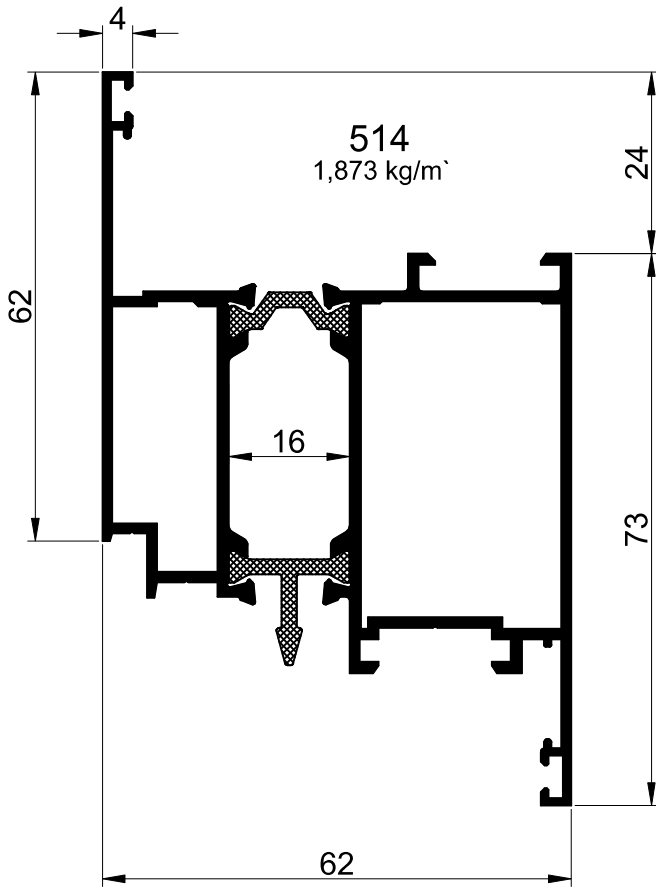
- **kvalitet** potvrđen od strane evropskih i domaćih sertifikacionih kuća, kako za gotove elemente tako i za sam proces proizvodnje sastavnih komponentata
- **ekologija** podrazumevana kao cilj dugi niz godina, kako u proizvodnji izborom tehnologije, tako i u sastavnim delovima sistema koji su proizvedeni od reciklabilnih materijala
- **sigurnost** potvrđena kroz izbor materijala bezbednih za stanovanje i upotrebu, ali i kroz mogućnost integrisanja sistema protivprovalne zaštite u nekoliko različitih bezbednosnih nivoa
- **komfor** postignut unapređenjem četiri elementa za udobnost: termičke izolovanosti koja obezbeđuje toplotu na dodir, kontrole mikroprovetranja prostorija koja eliminiše neprijatnu zaptivenost, zvučne izolovanosti za mir i intimu životnog i radnog prostora, i statičke nosivosti koja pruža mogućnost projektovanja velikih otvora uz uvođenje idealne količine svetlosti u ambijent

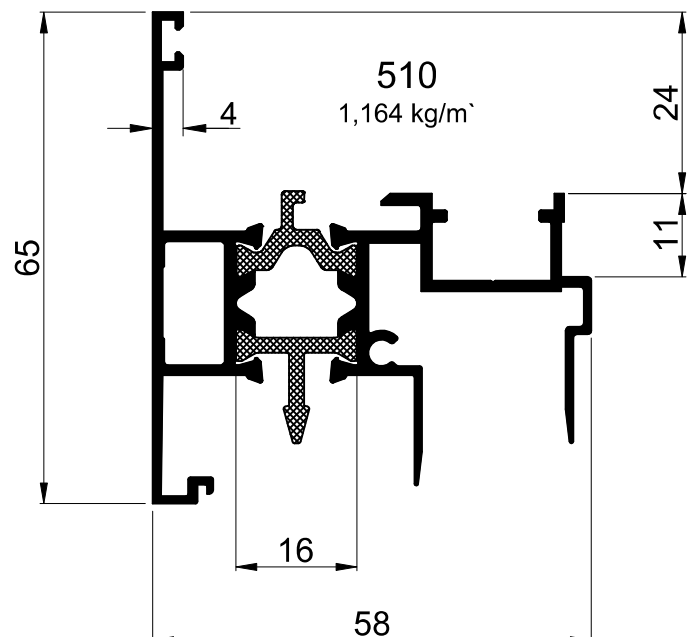
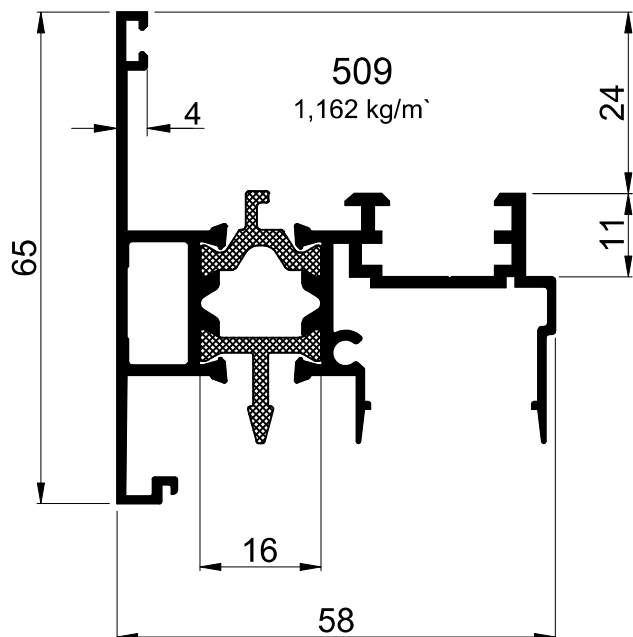
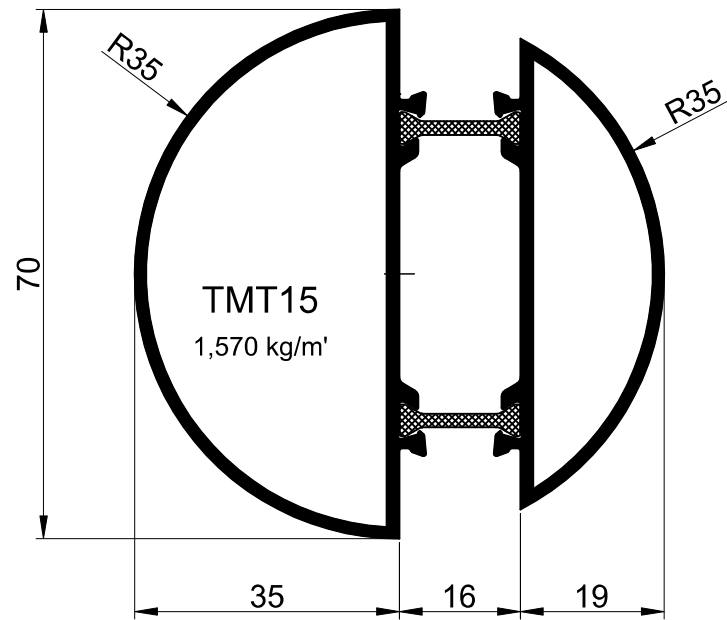
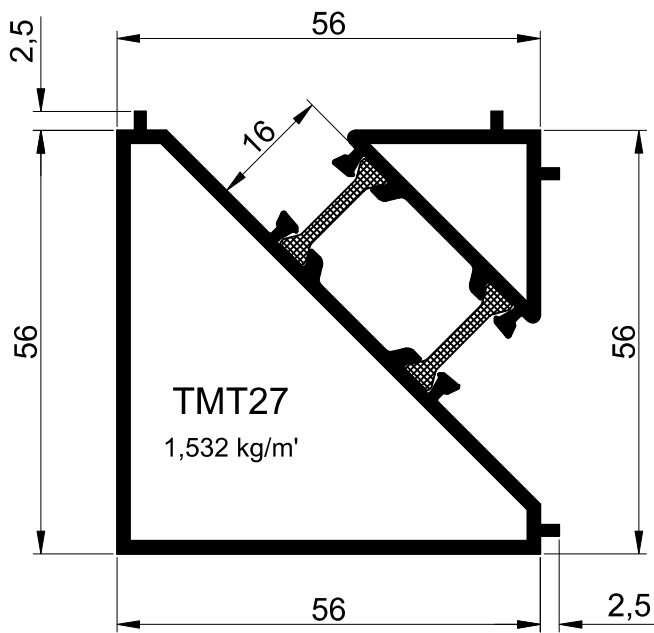
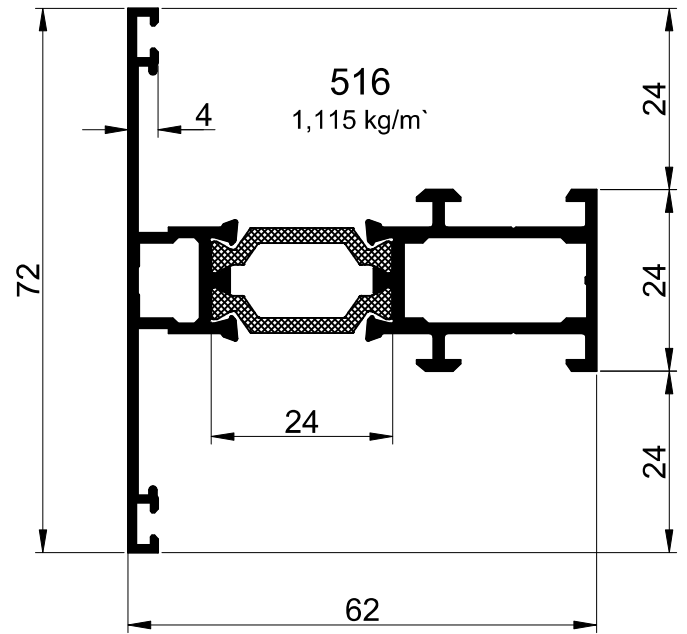
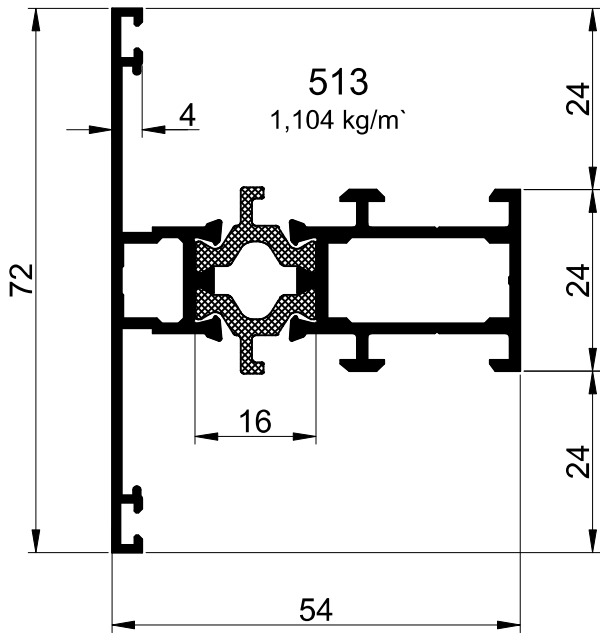
- **quality** validated by the European and national certification bodies, both for finished elements and the production process of structural components
- **ecology** one of the most important goals for many years now, combining energy efficient, ecological manufacturing technology and recyclable materials for the system components
- **safety** guaranteed on several levels, ranging from application of safe and ecological materials used in our products, to easy integration of anti-burglar systems in several different security level
- **comfort** achieved by improving the four elements of cosiness: thermal insulation for warmth, micro ventilation control in the room that eliminates unpleasantly stale air, sound insulation for peaceful and quiet living and working space, and system's mechanical properties which allow creation of large openings for optimal amount of light in interiors

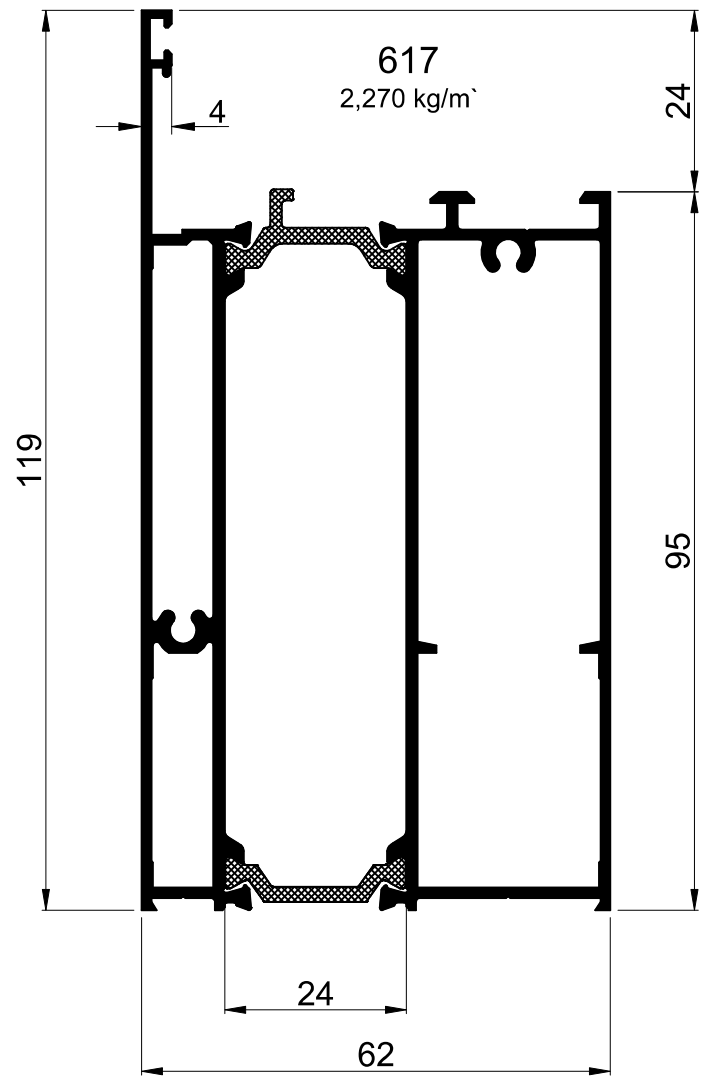
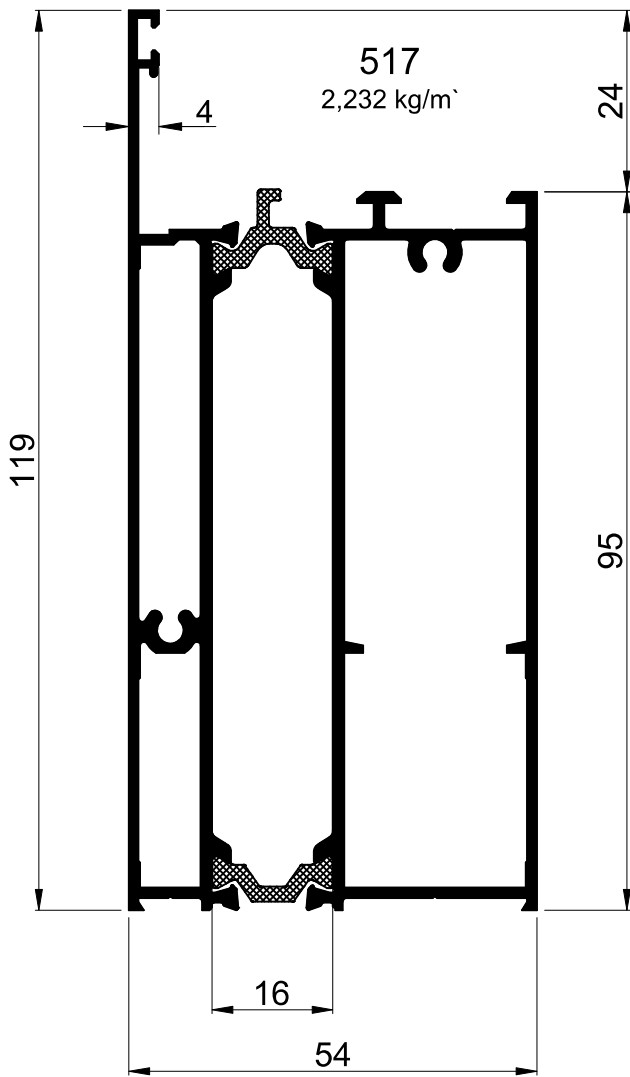
- **Качество** одобрено Европским и националним органима по сертификации, как для готовые элементы так и для самого процесса производства неотъемлемых компонентов
- **Экология** является в качестве цели для многих лет назад, как в производстве, выбором технологий, а также системные компоненты изготовлены из перерабатываемых материалов
- **Безопасность** подтверждена выбором материалов безопасными для проживания и использования, а также возможность интеграции систем охранной в нескольких различных уровней безопасности
- **Комфорт** достигается путем улучшения четырех элементов комфорта: тепловой изоляции которая обеспечивает тепло на ощупь, микровентиляции которая устраняет неприятную герметичность, звукоизоляция для мира и спокойствия жизни и рабочие места, и статический конструкции что позволяет большие отверстия с введением идеального количества света в атмосфере

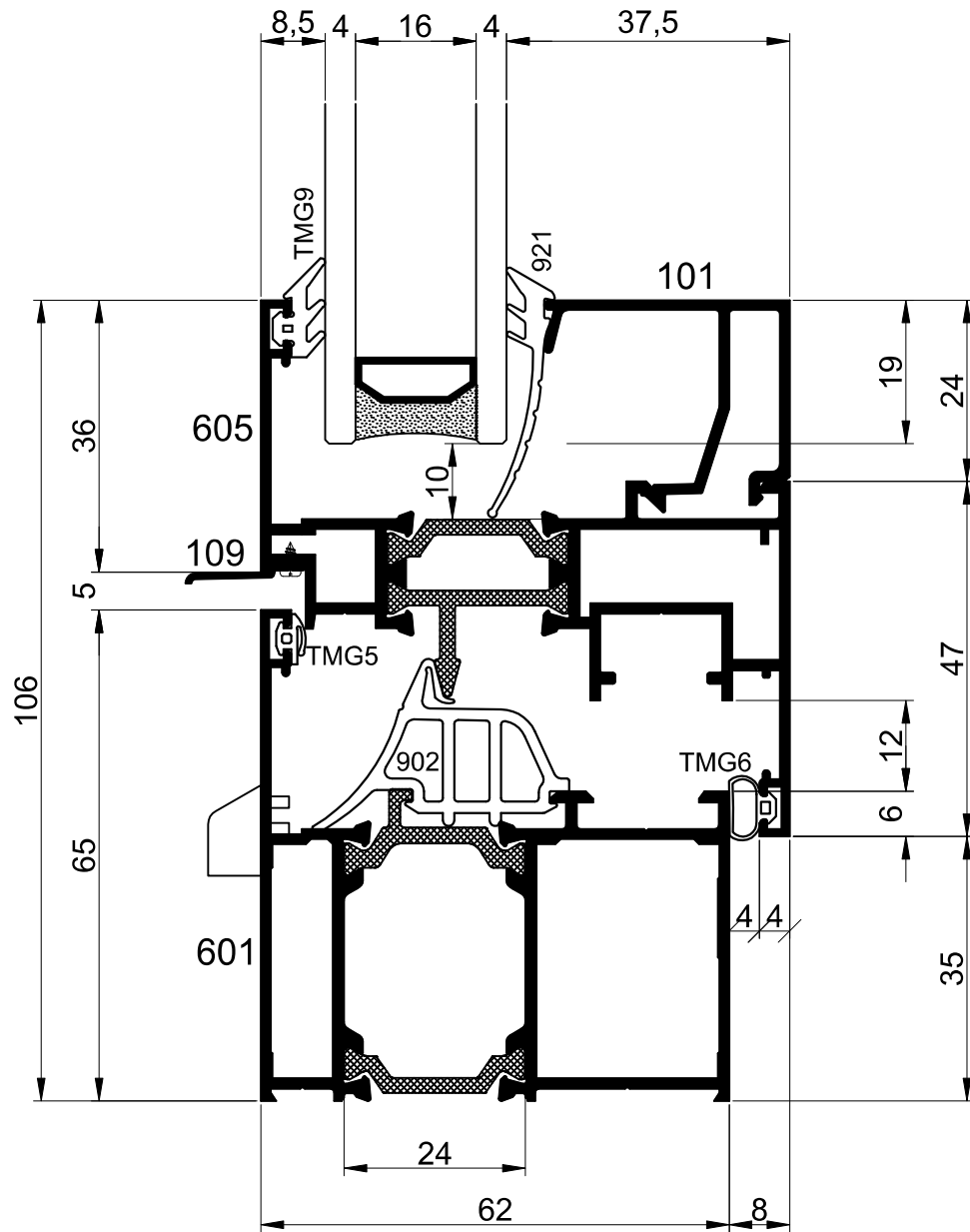


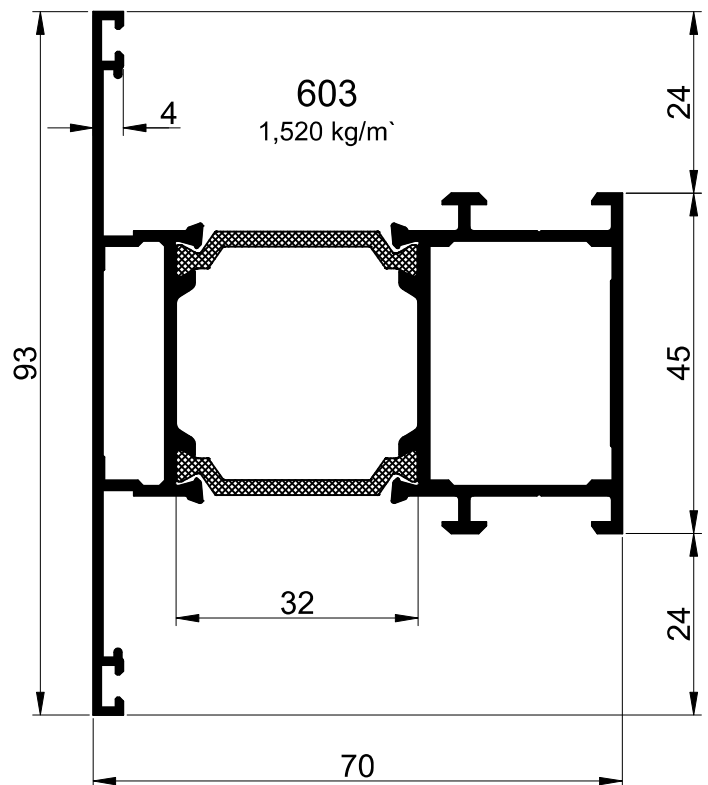
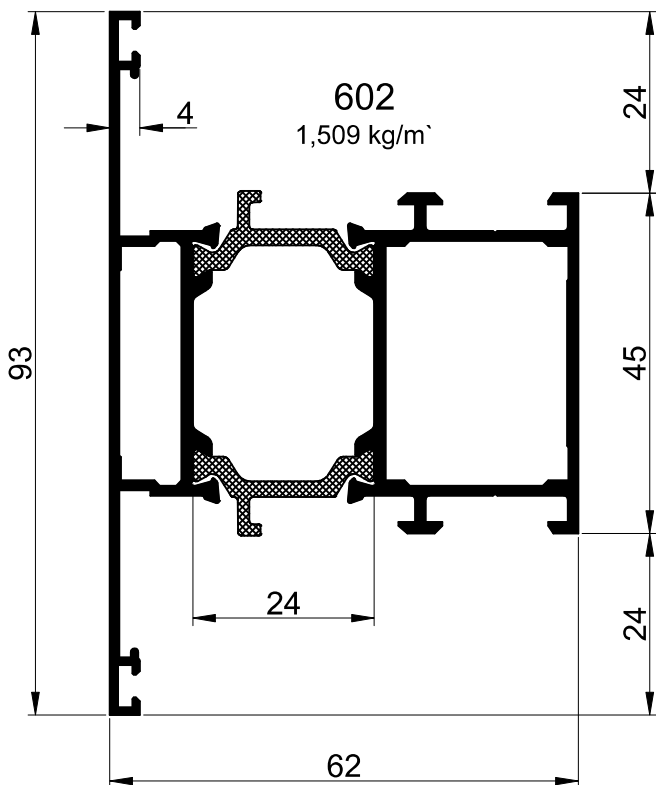
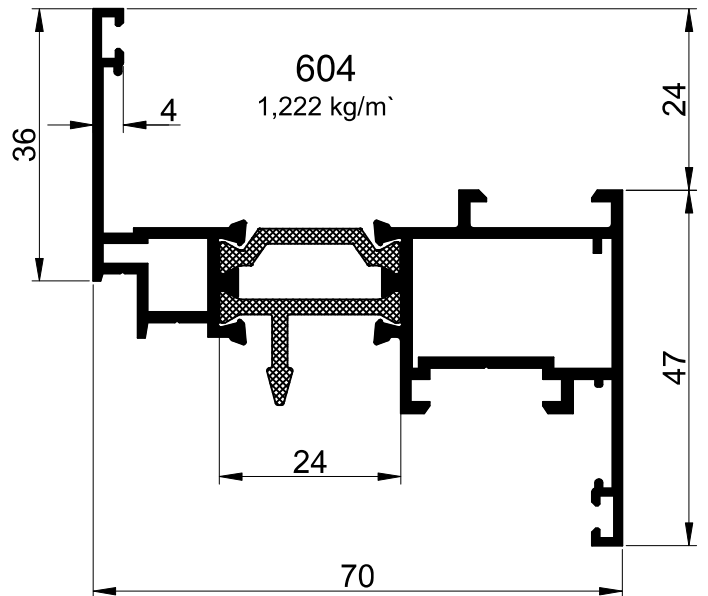
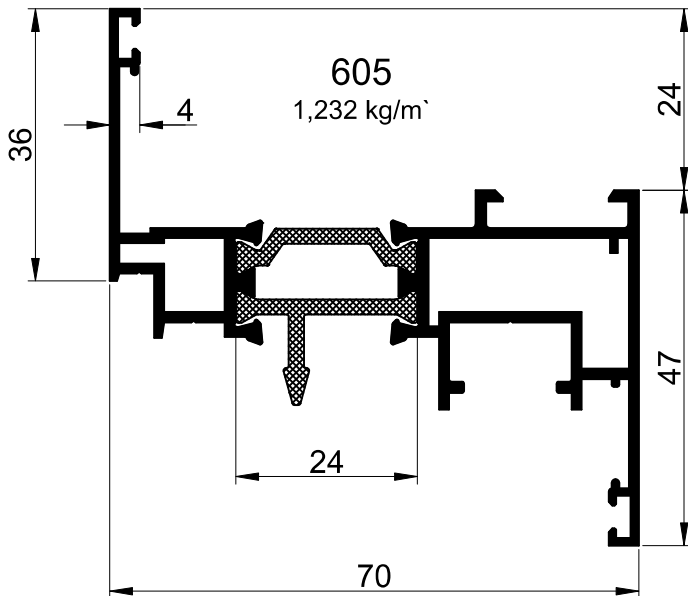
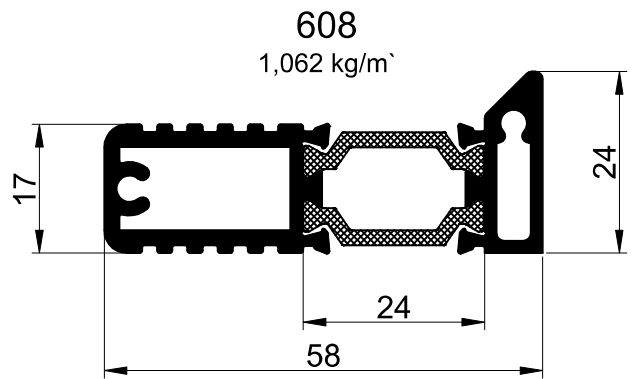
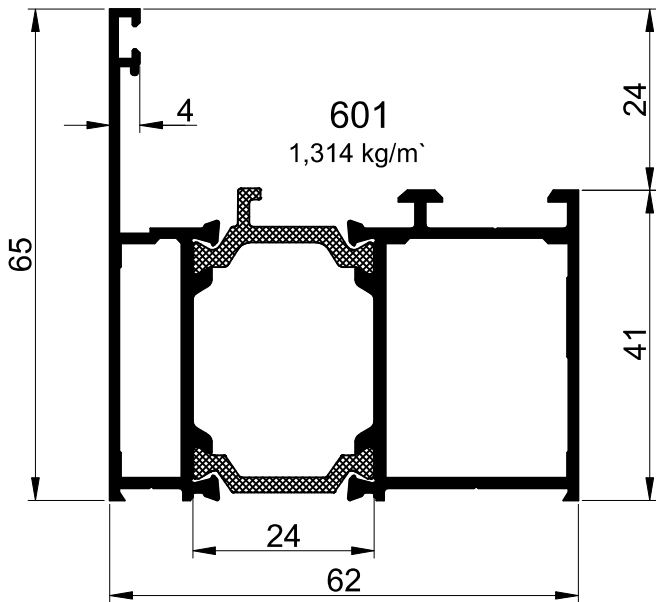


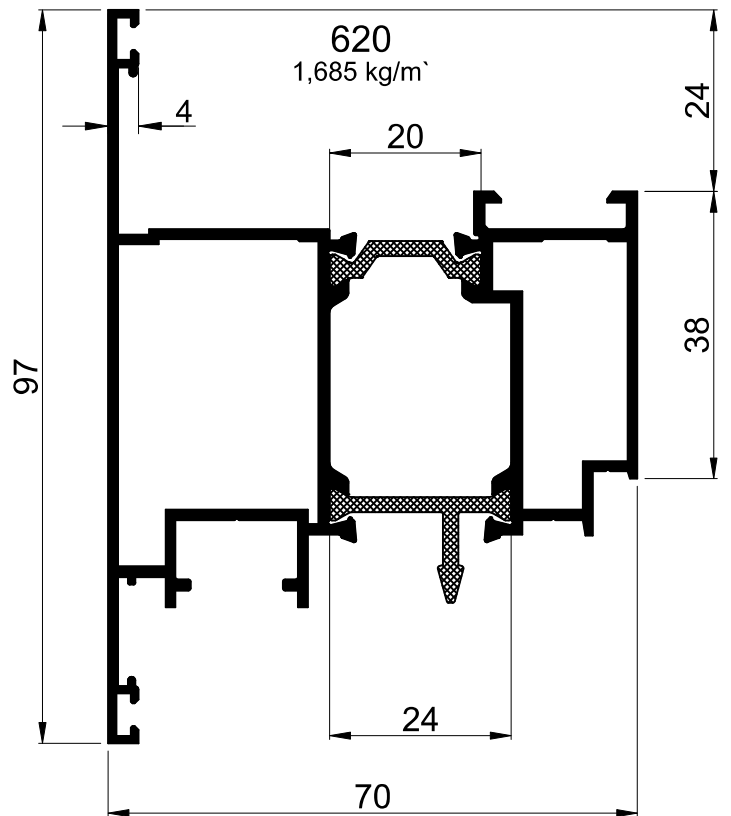
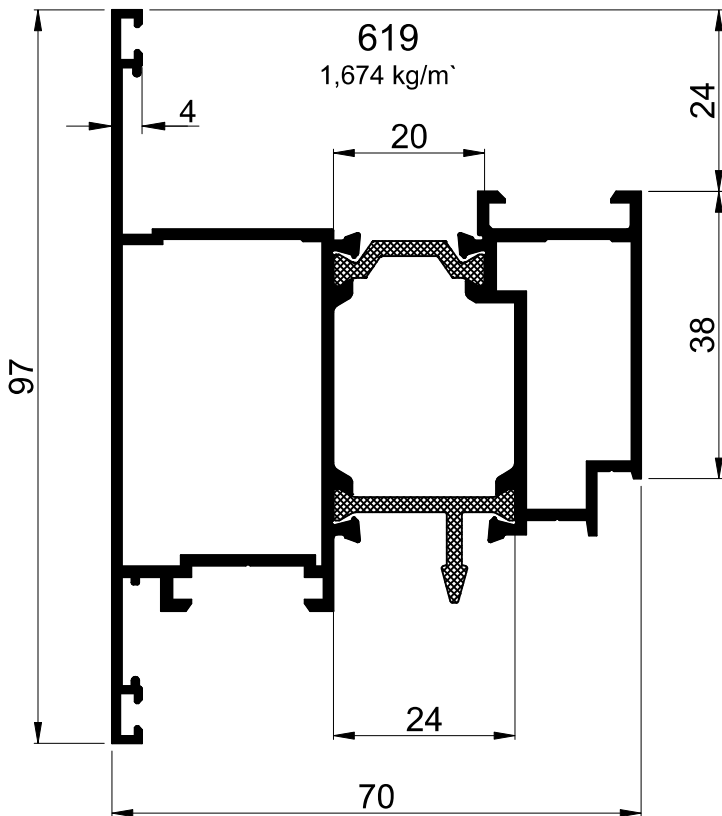
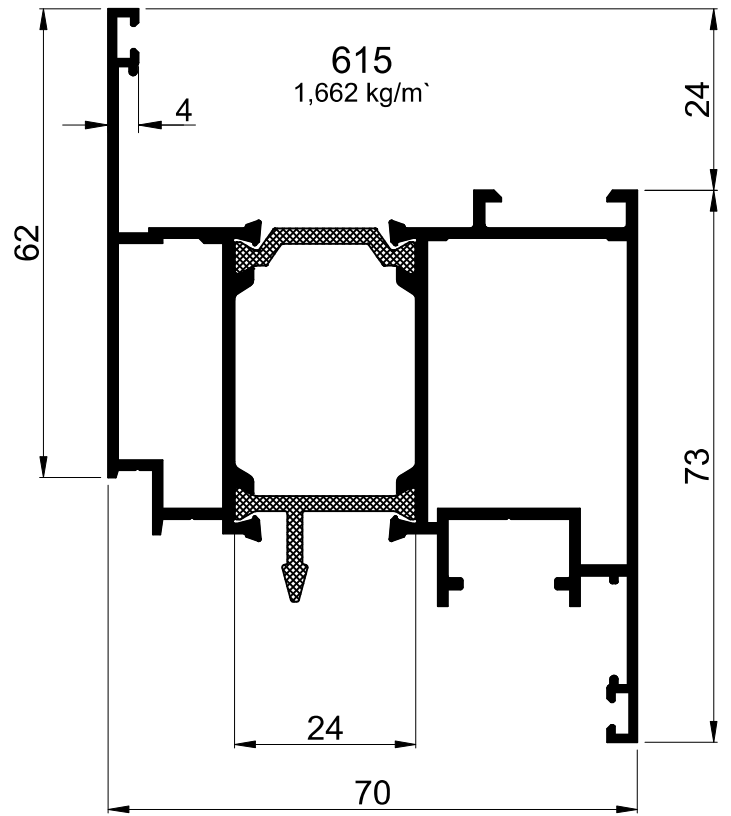
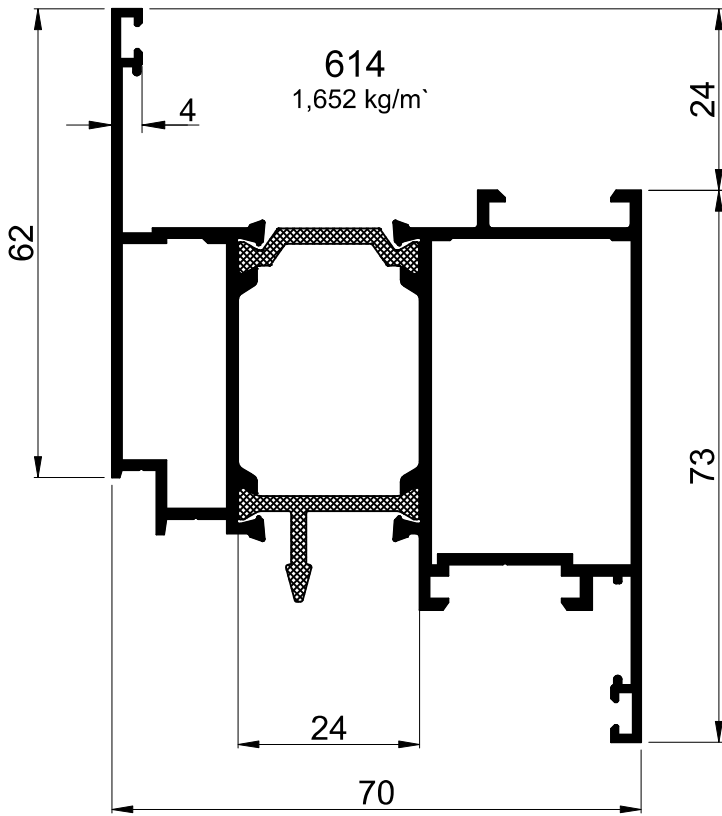


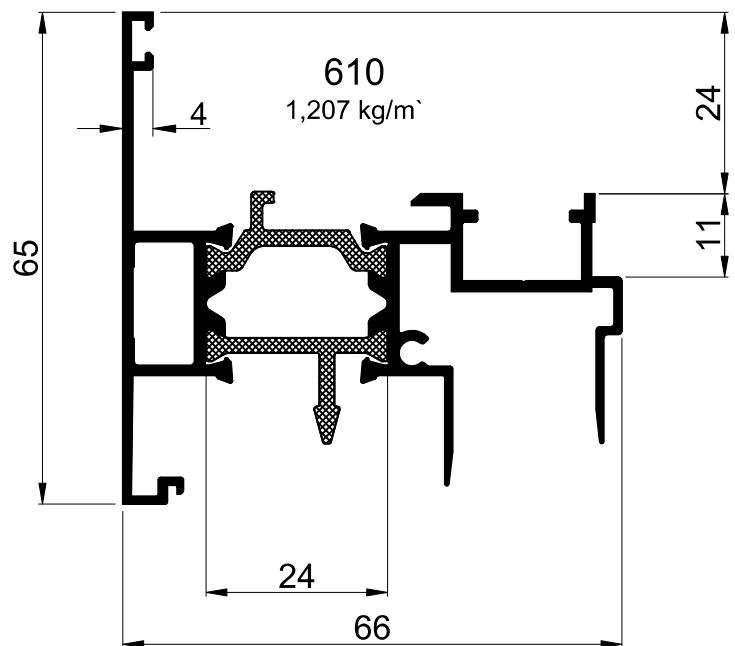
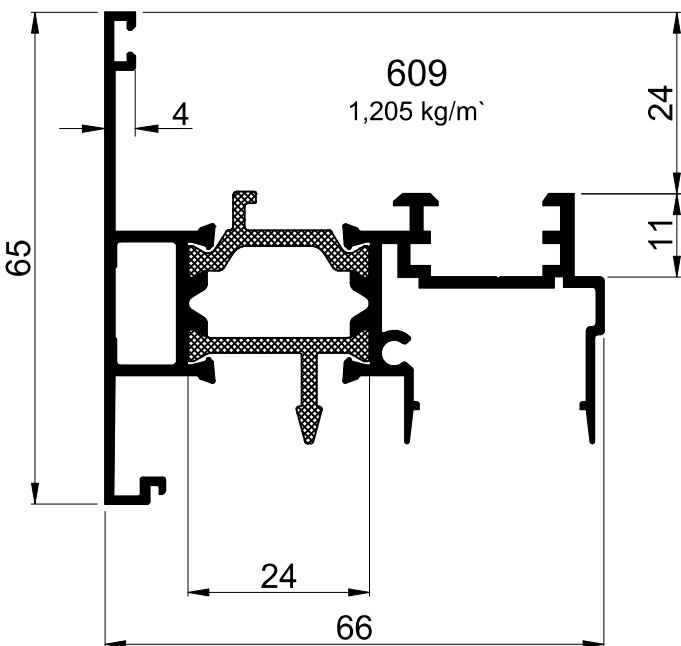
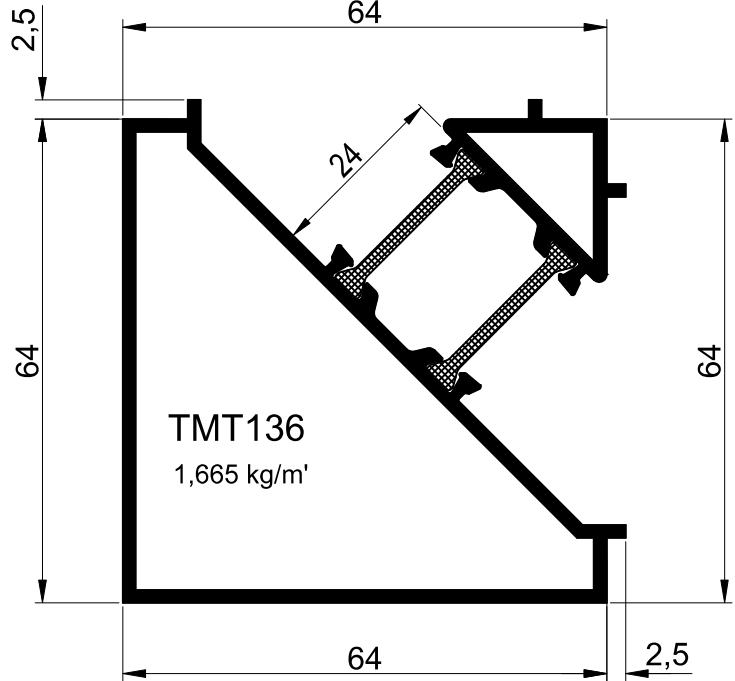
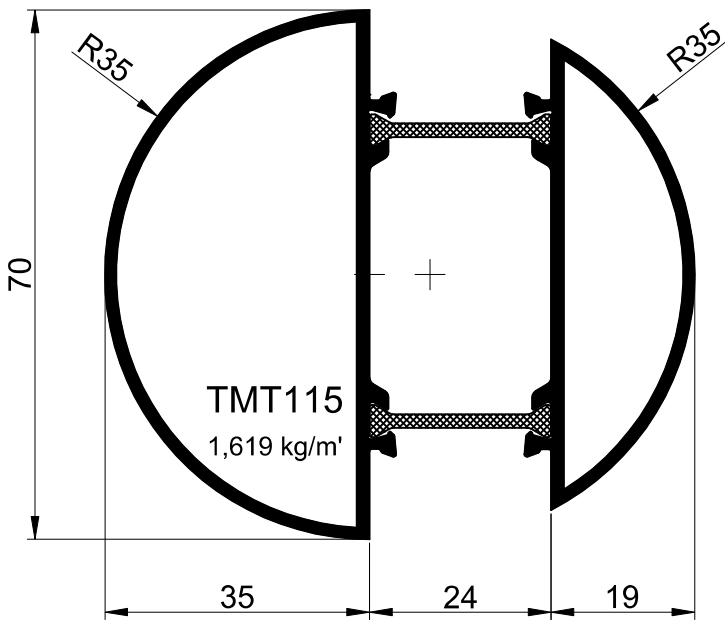
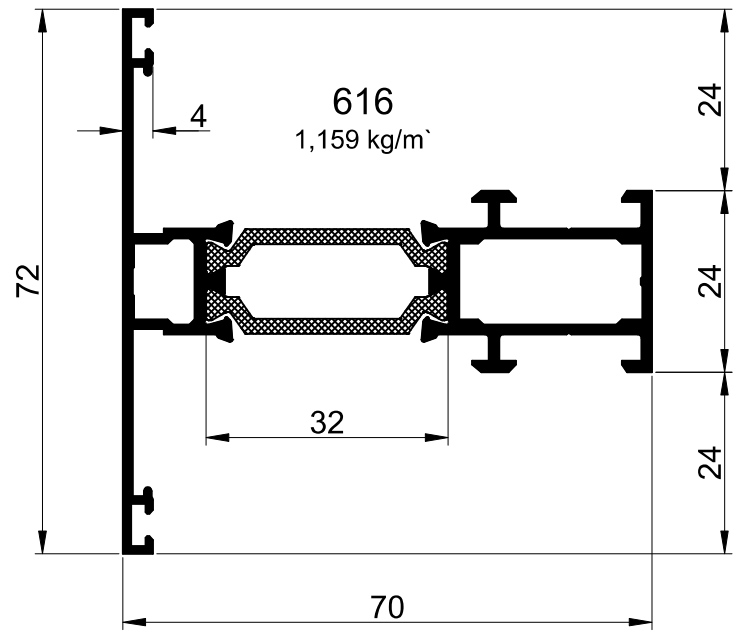
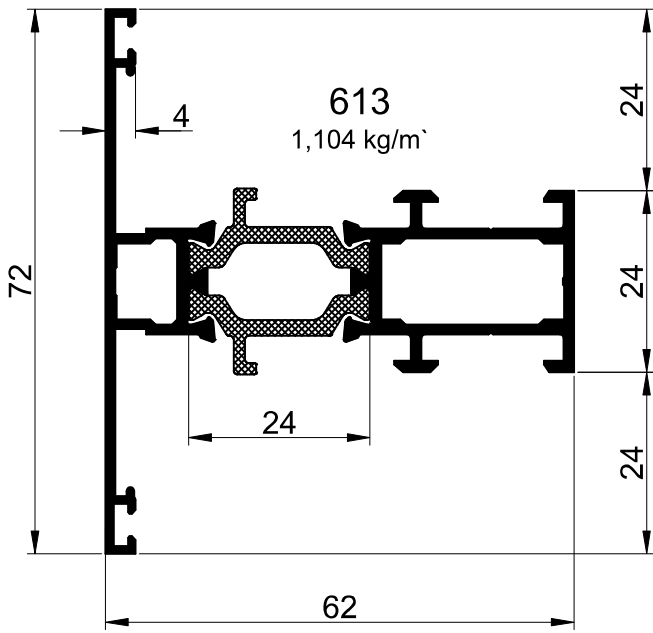


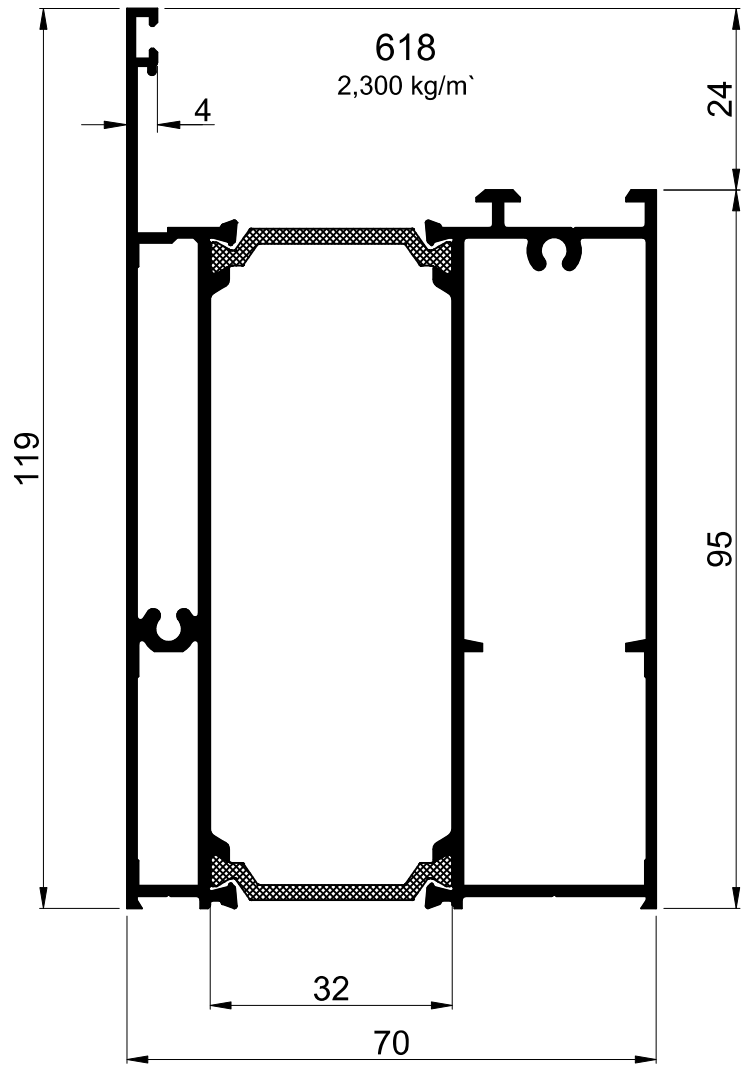
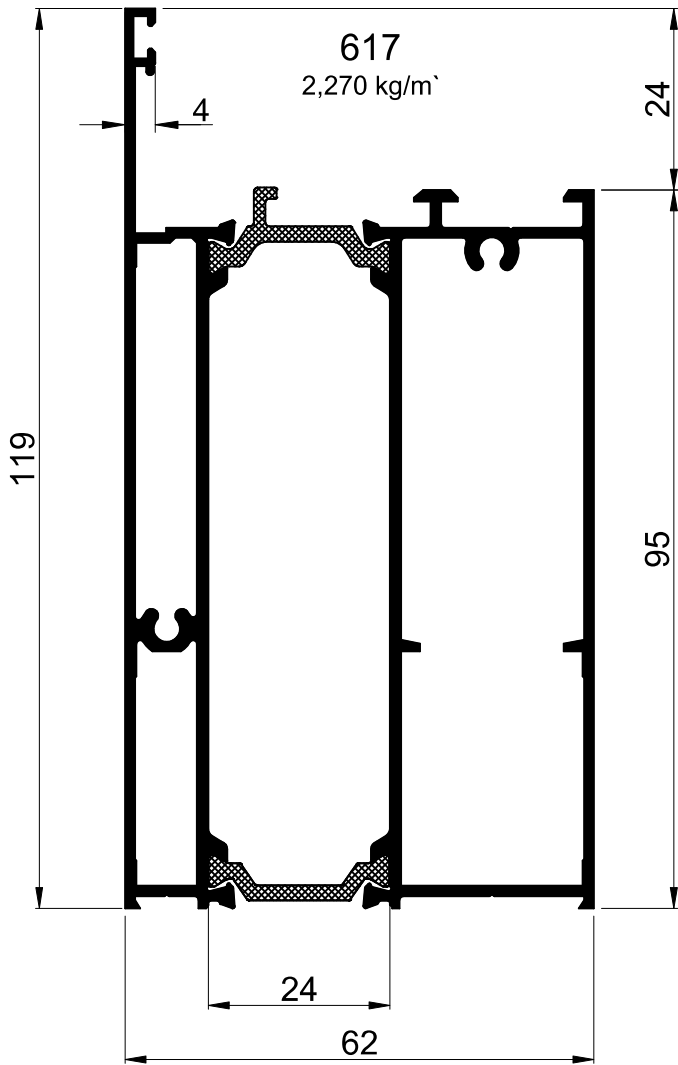


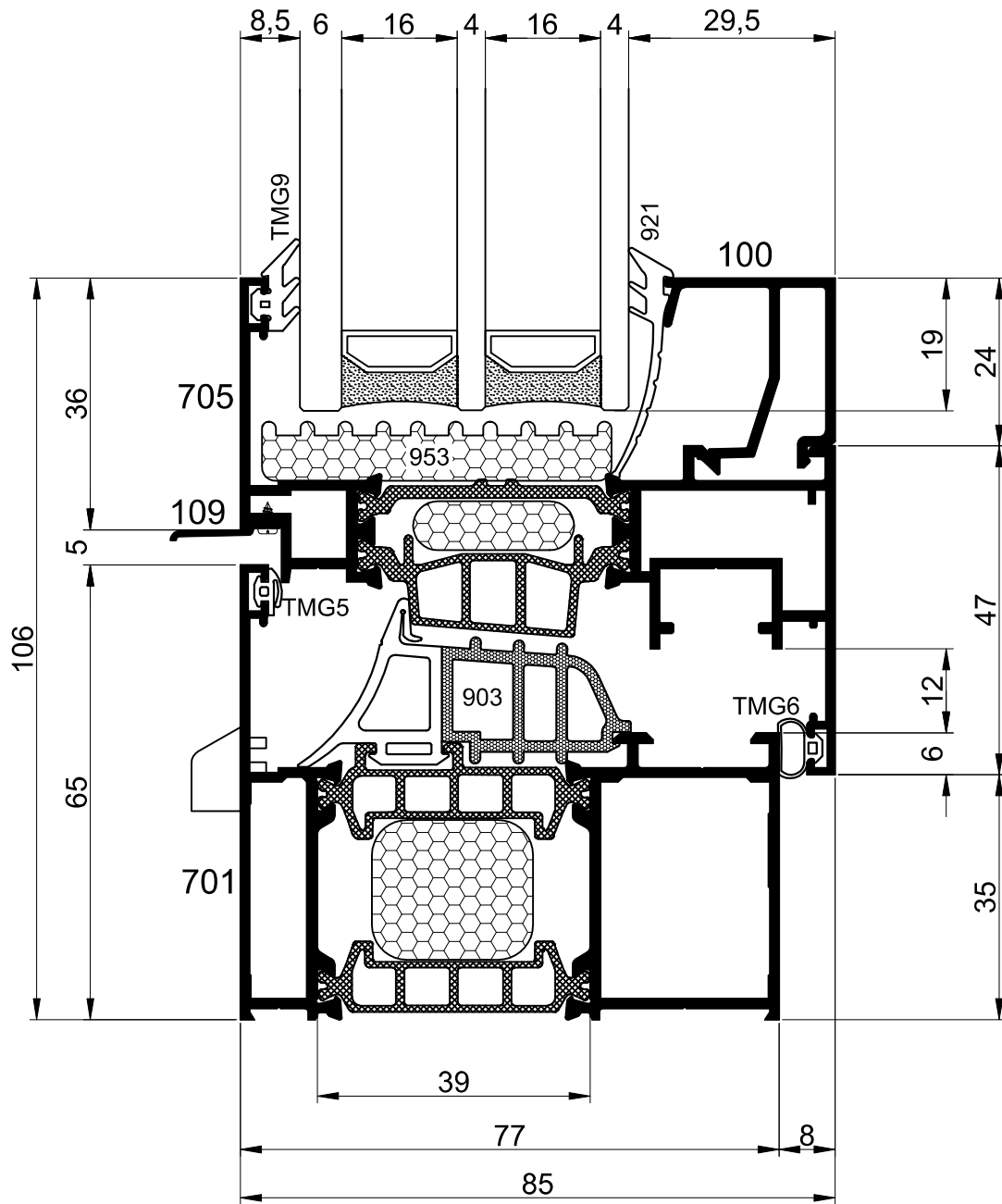


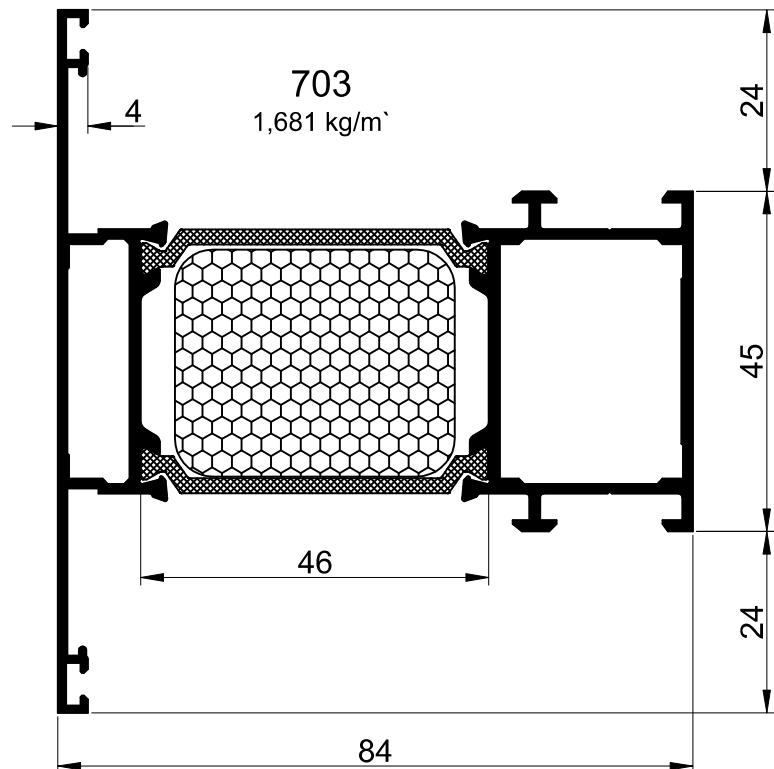
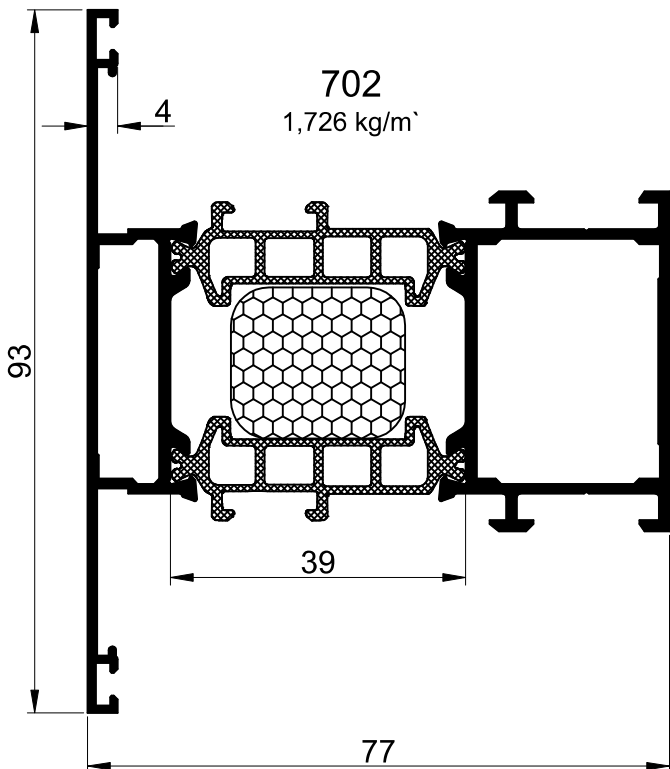
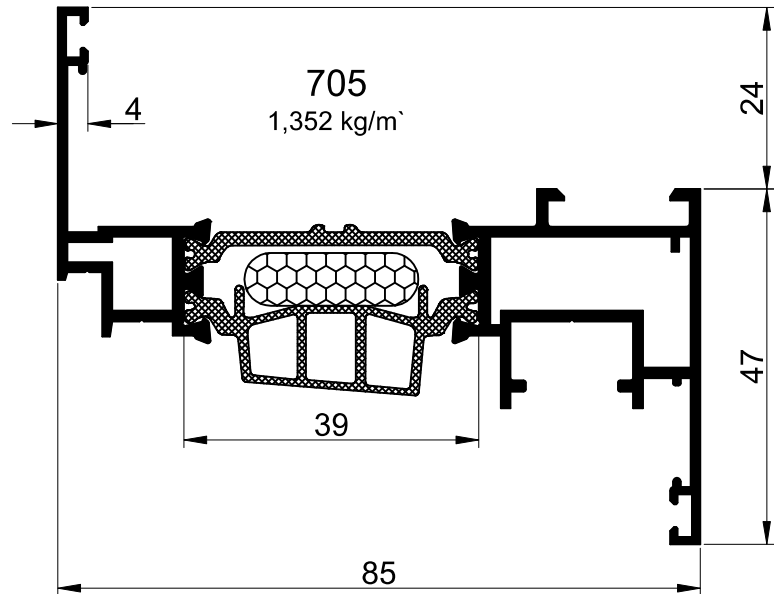
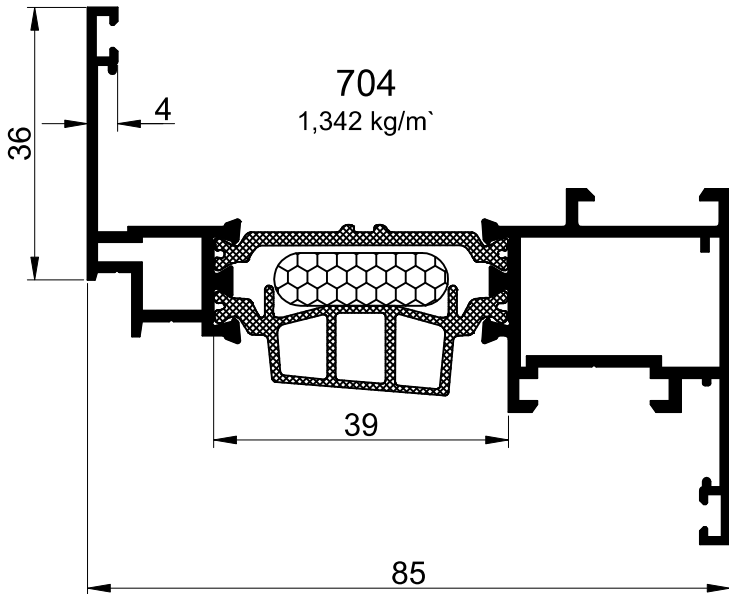
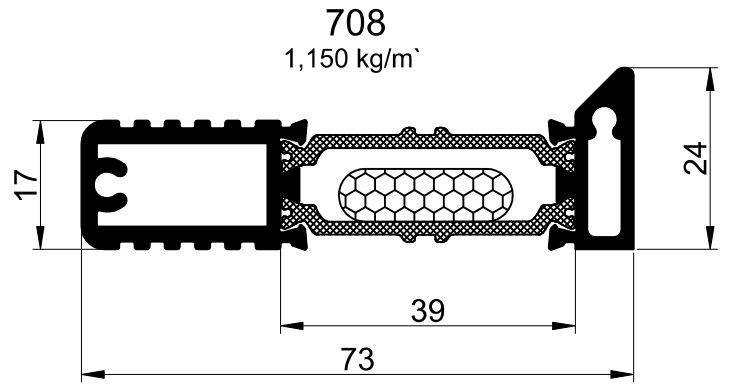
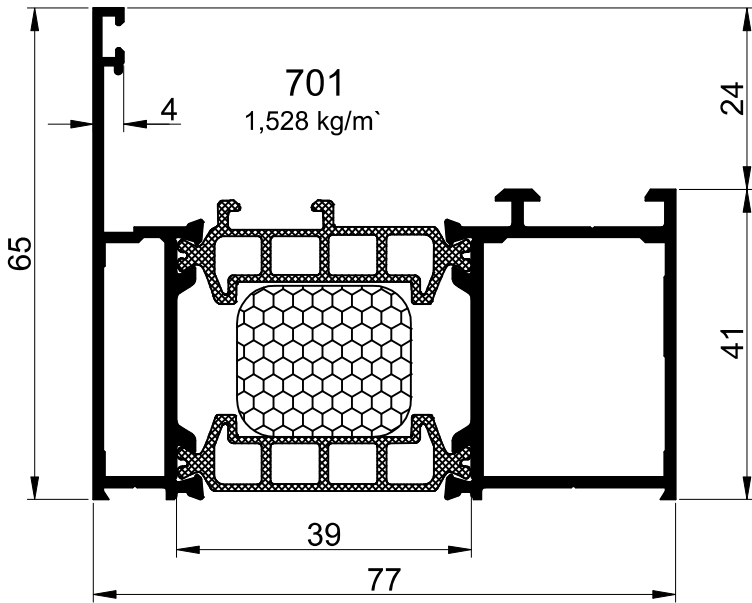


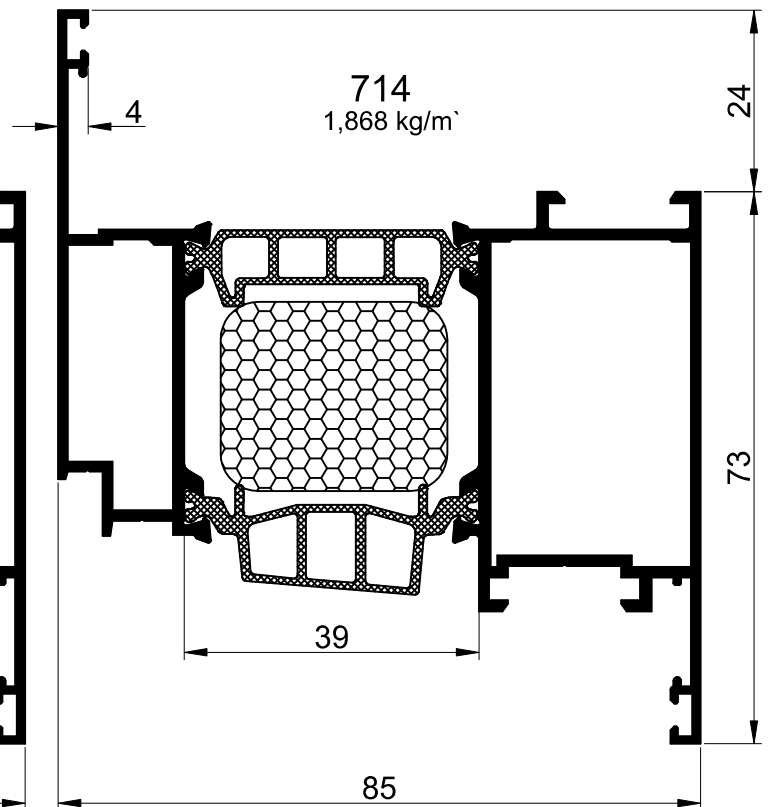
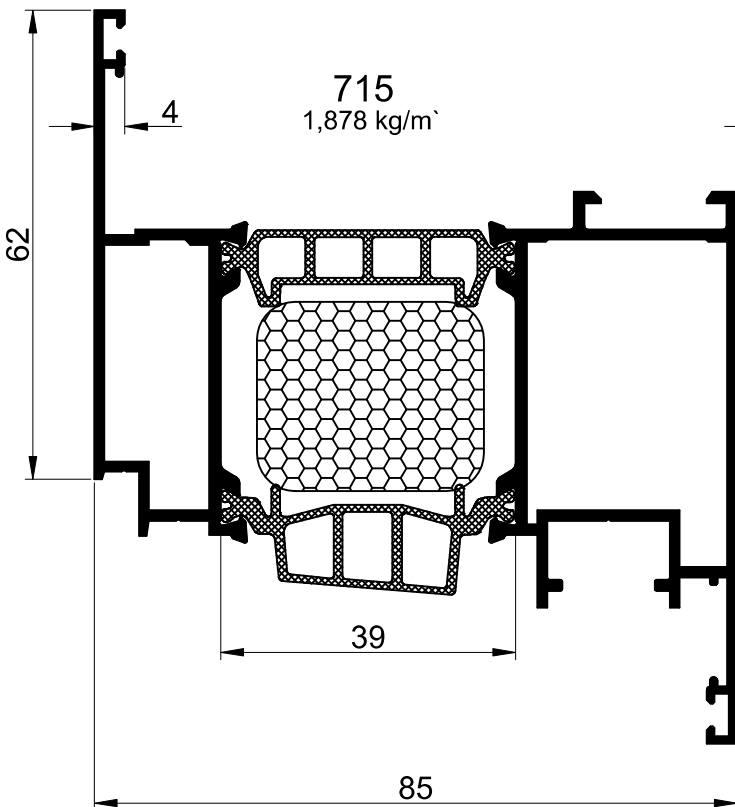
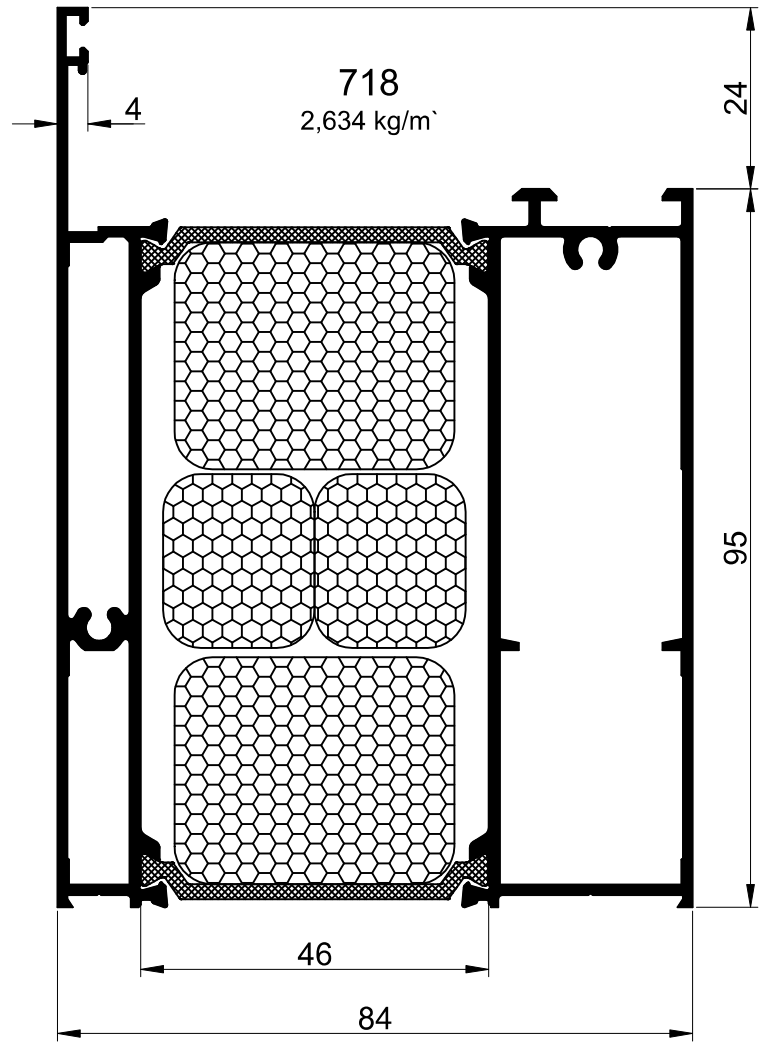
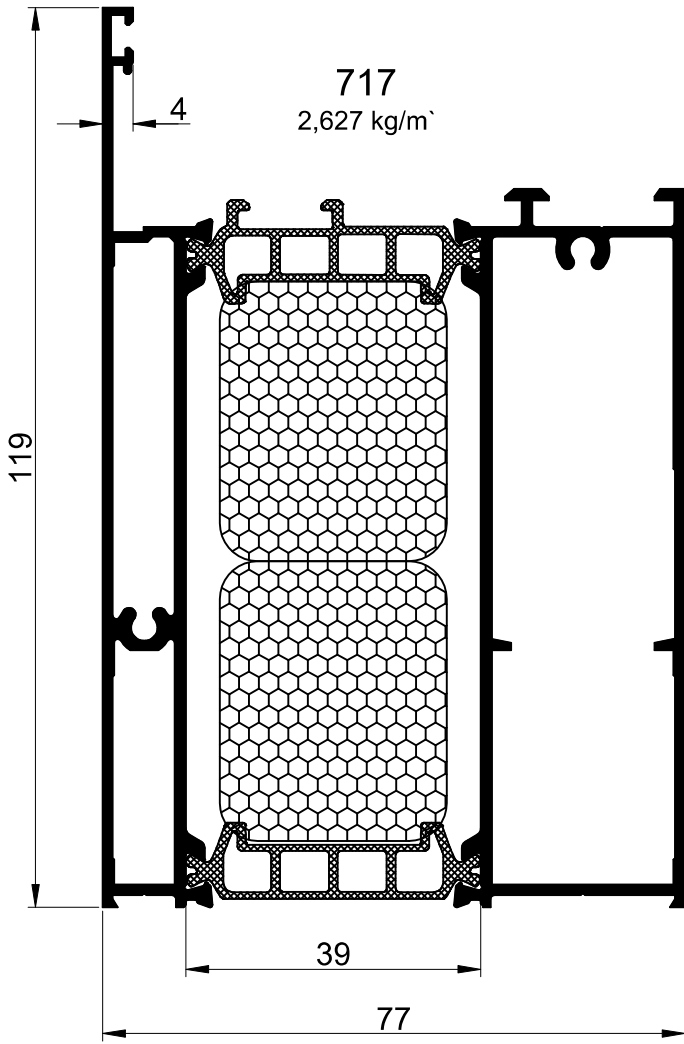


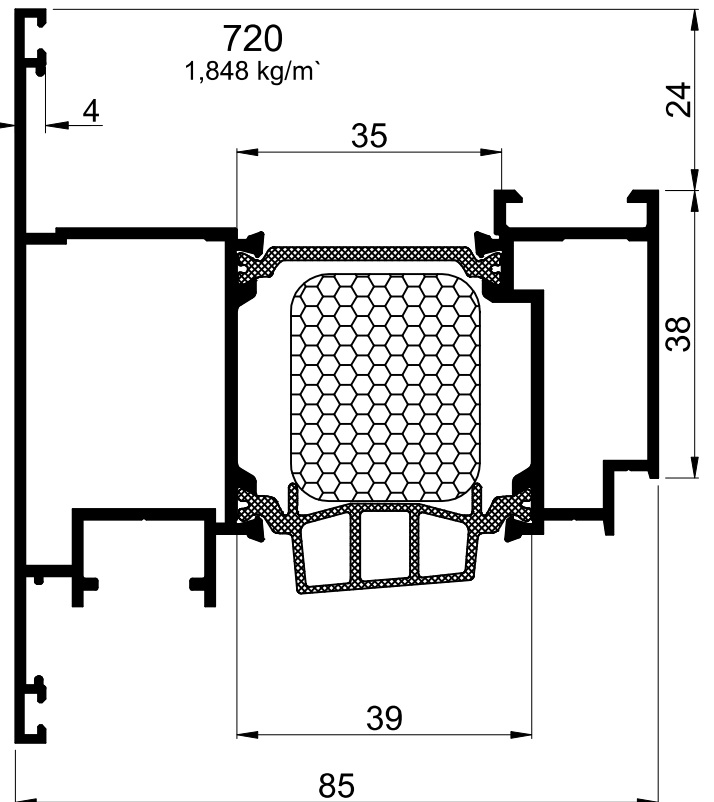
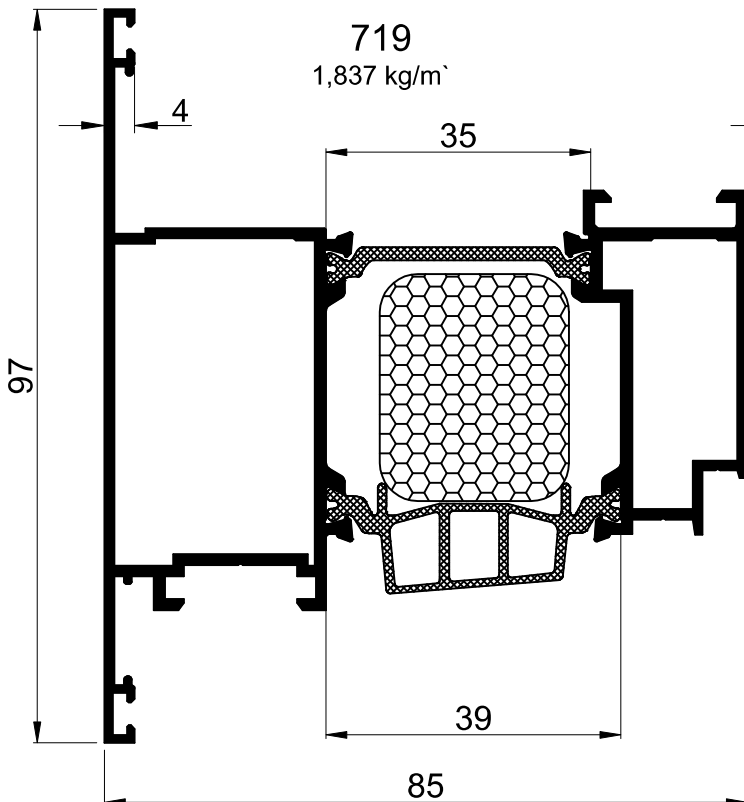
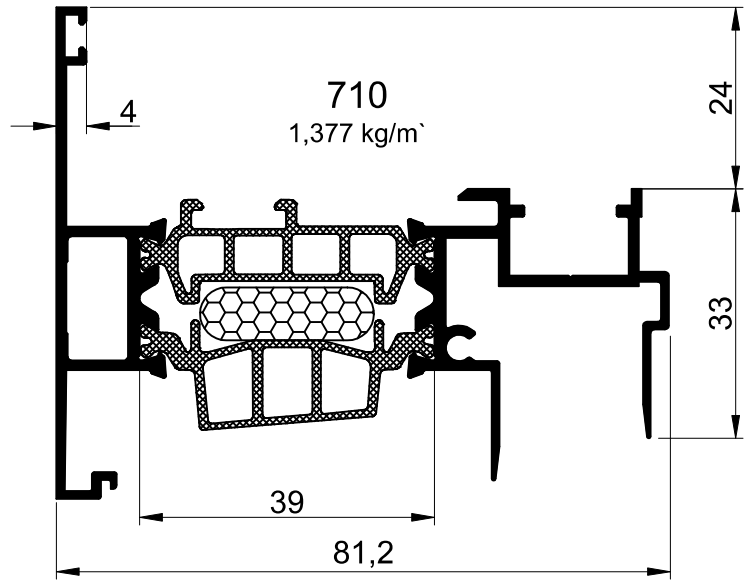
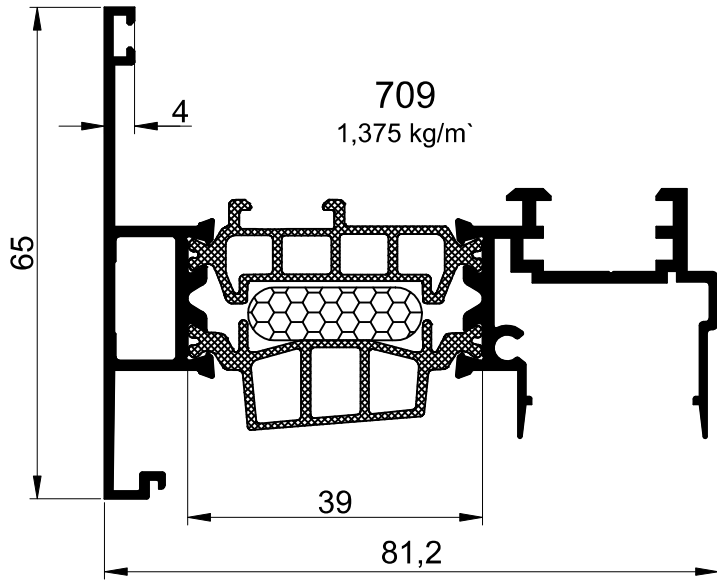
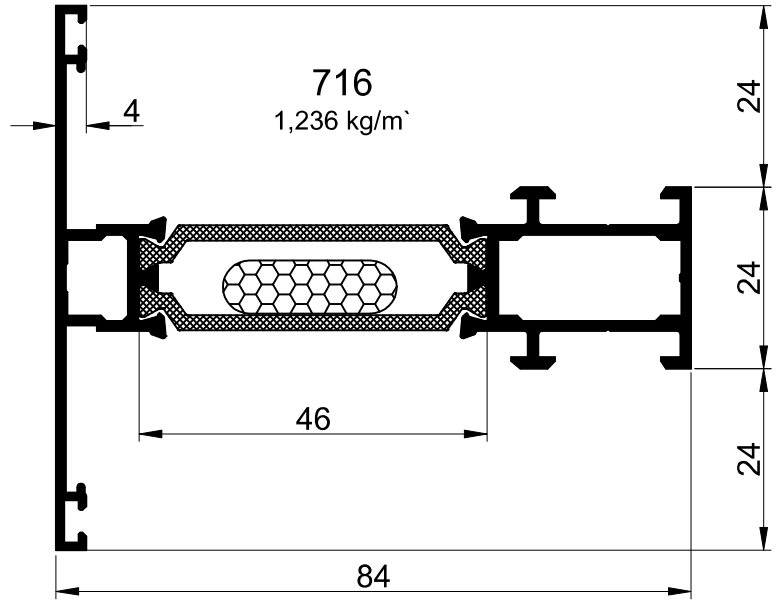
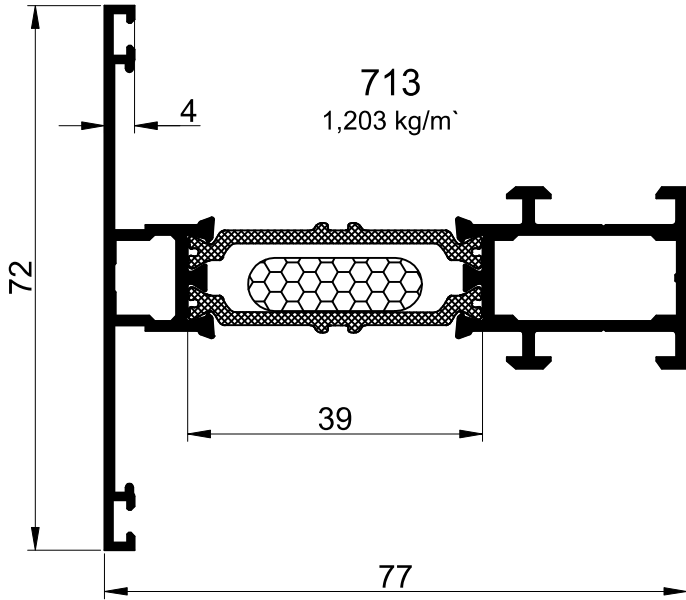


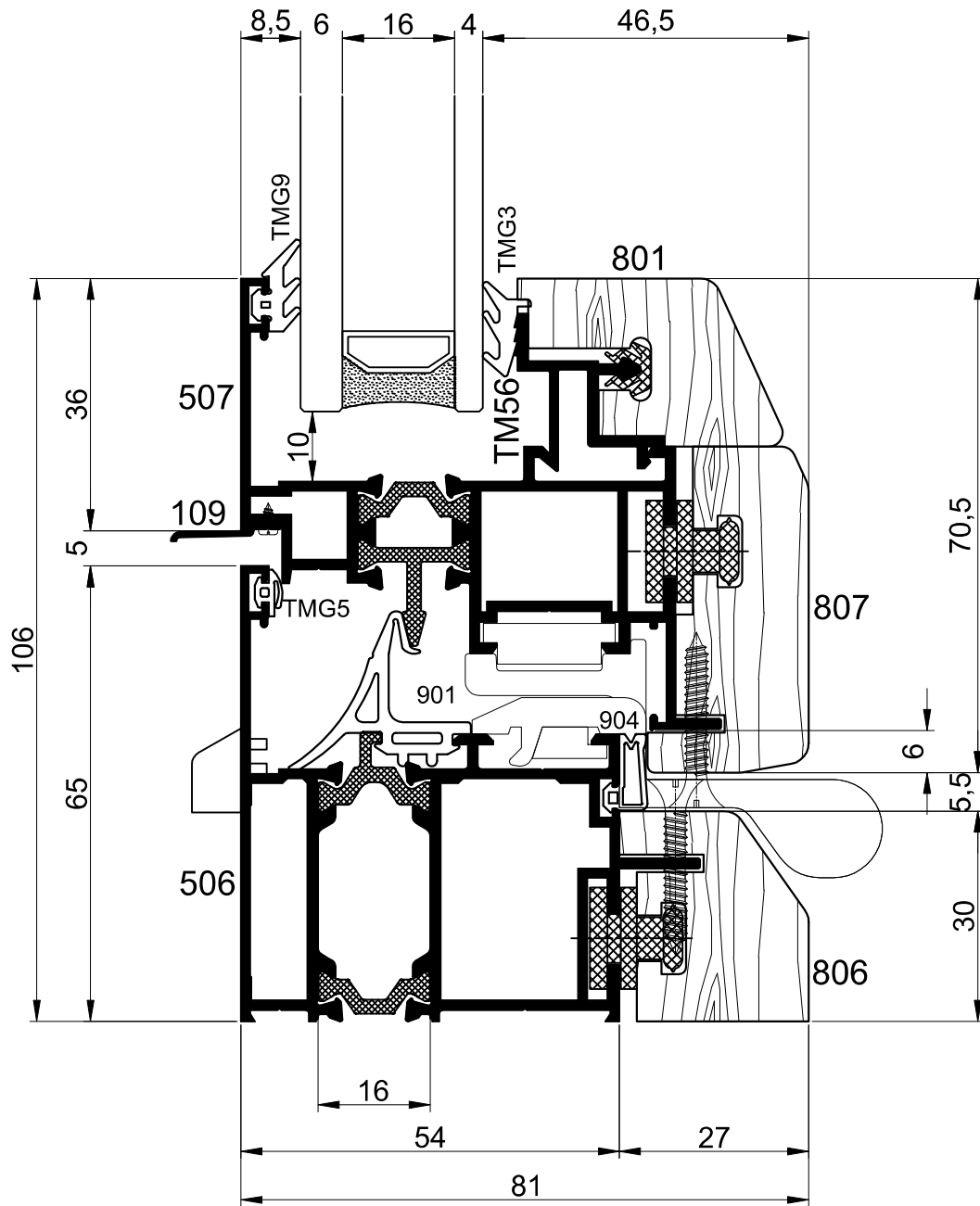


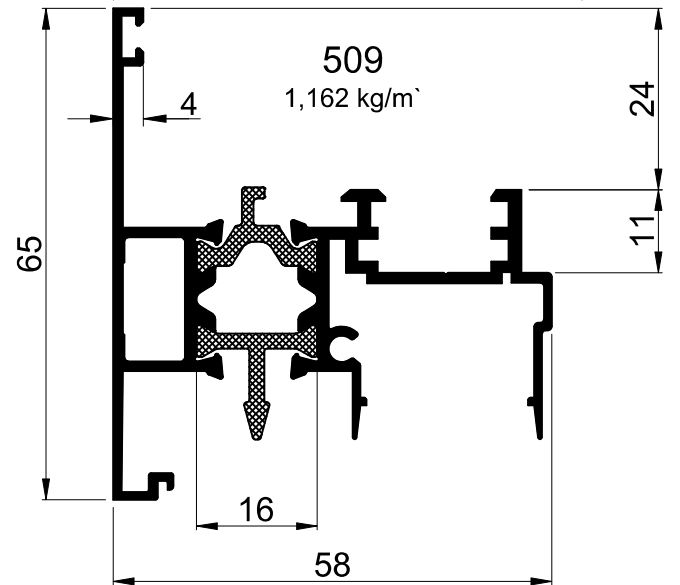
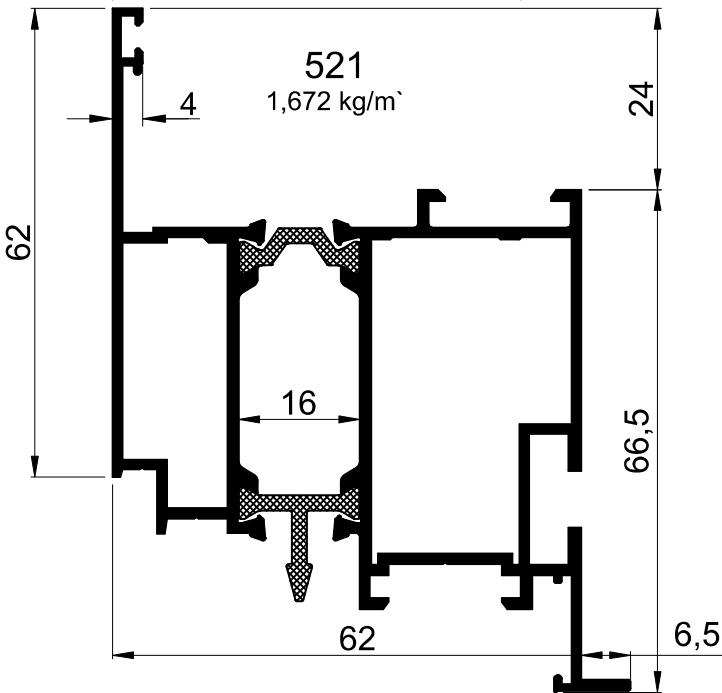
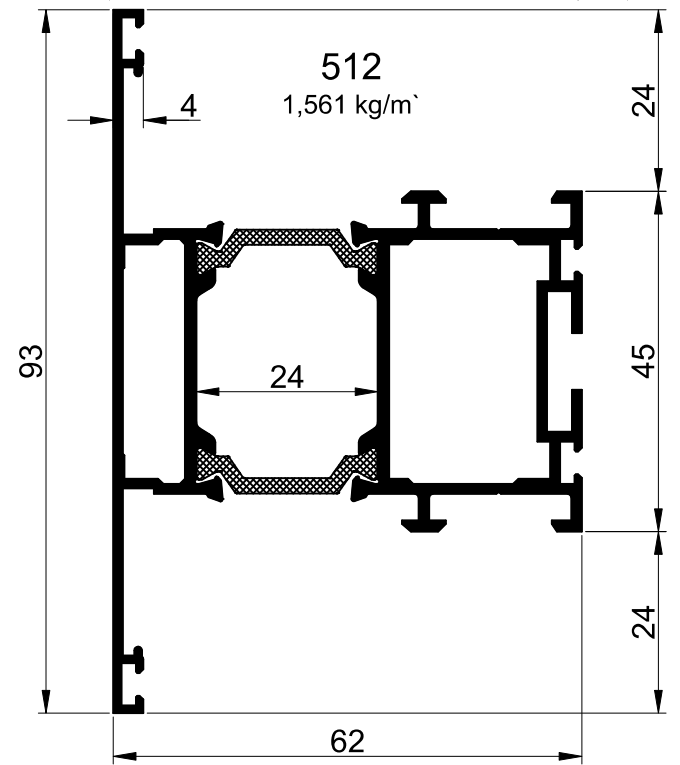
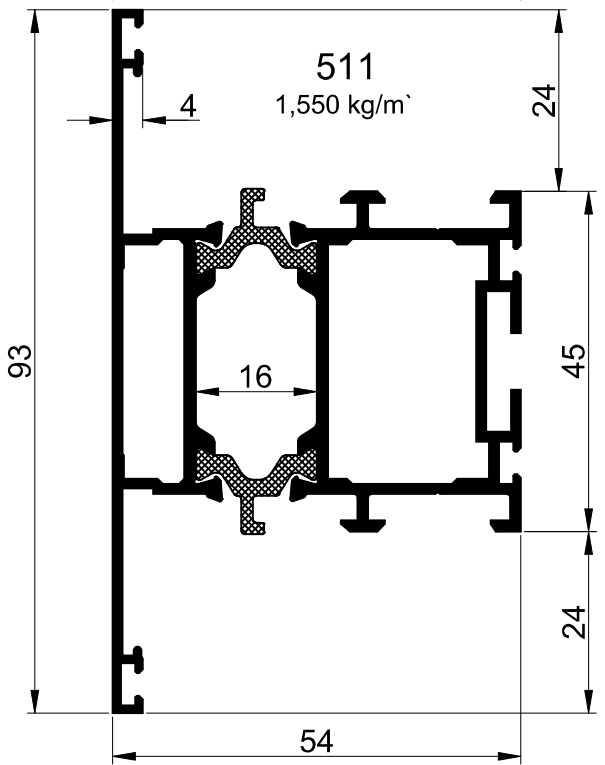
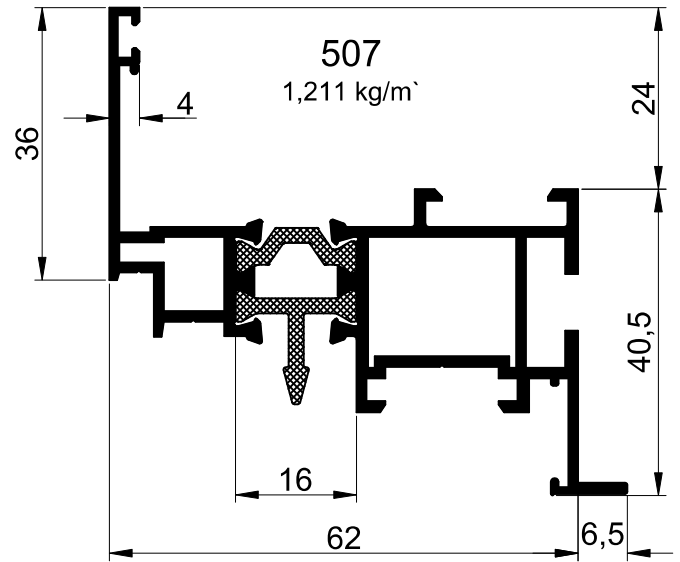
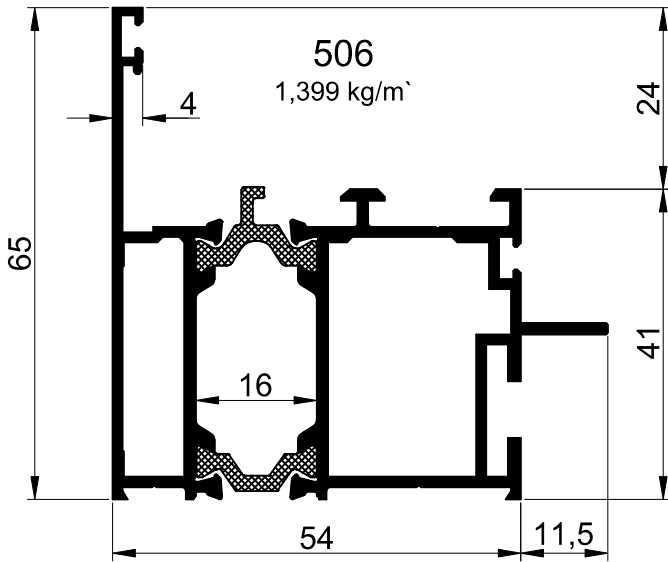


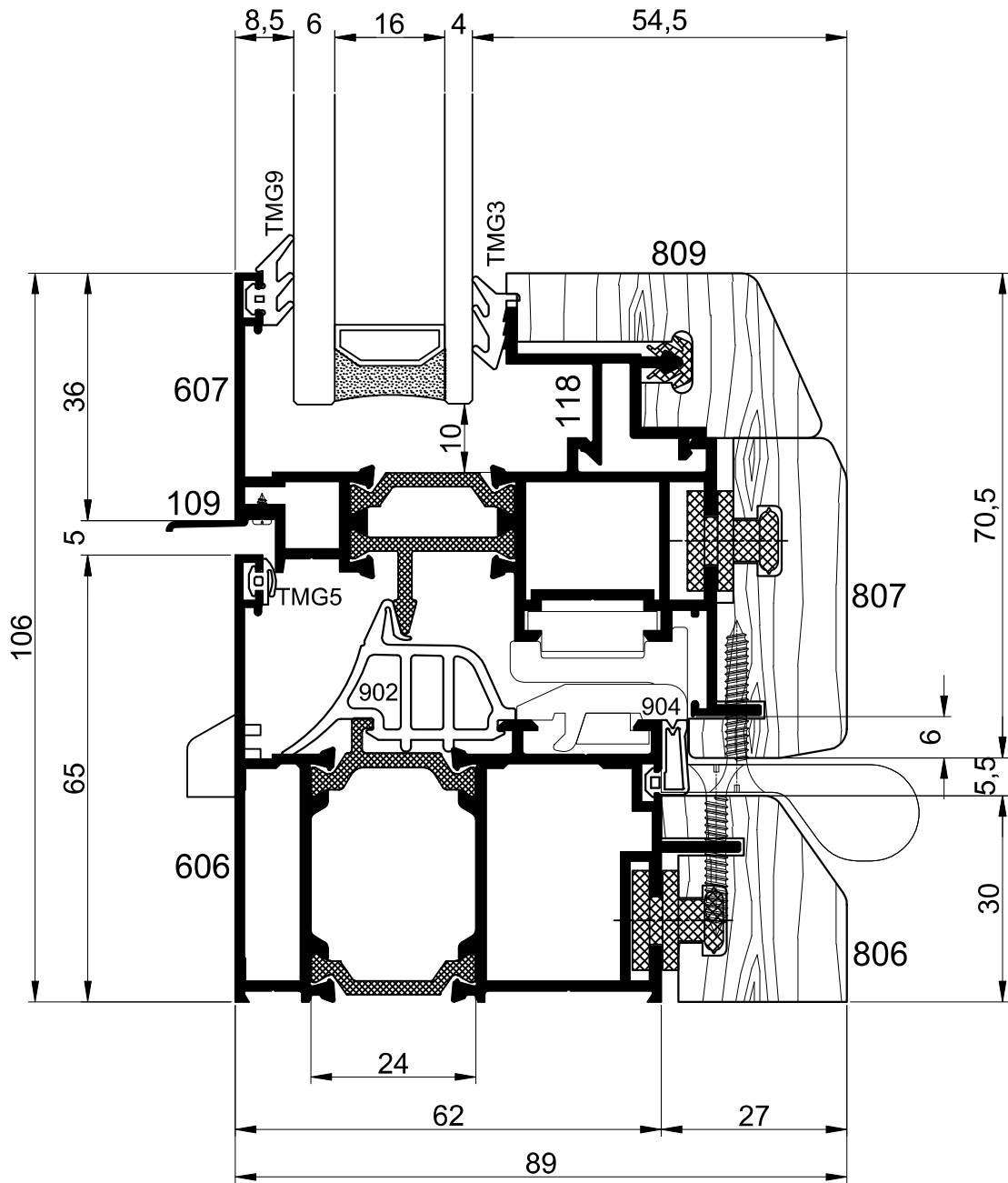


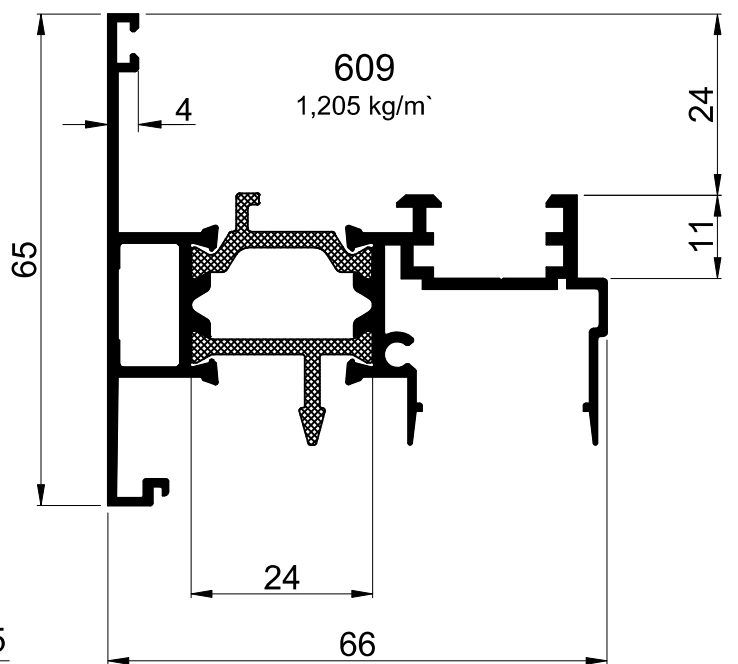
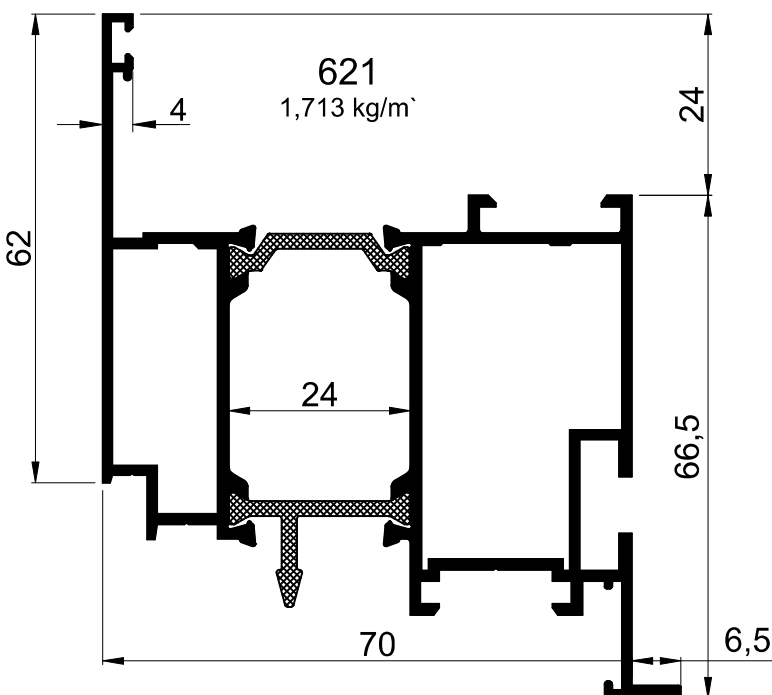
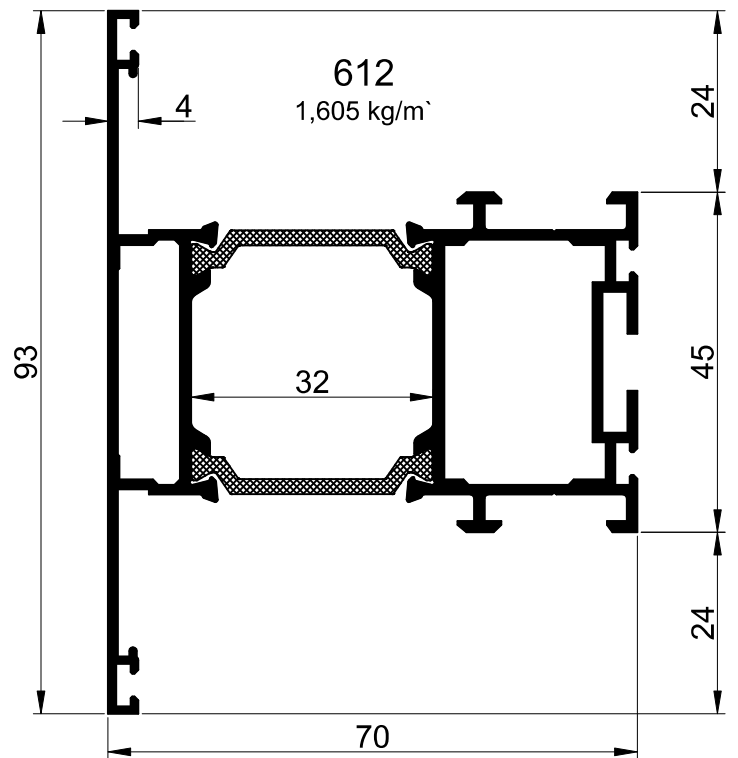
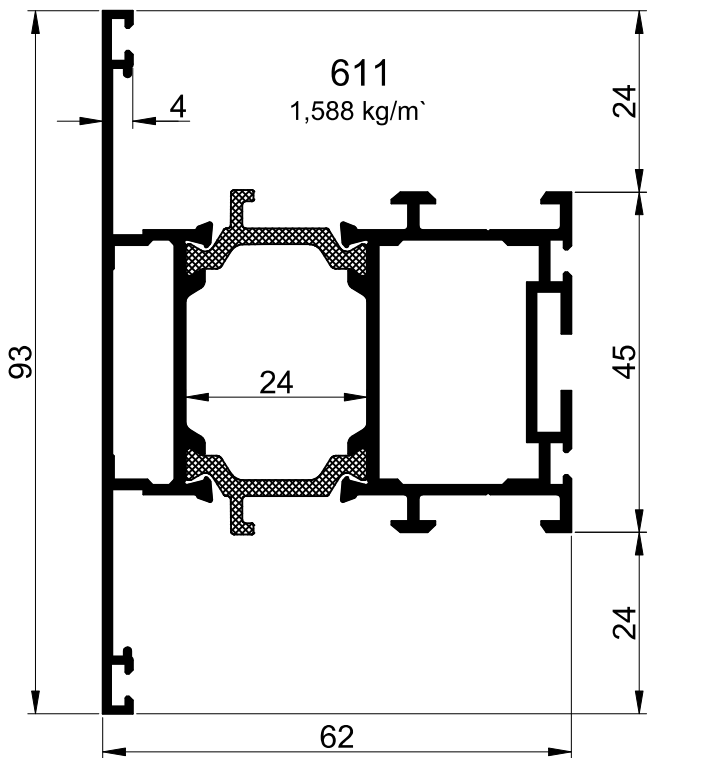
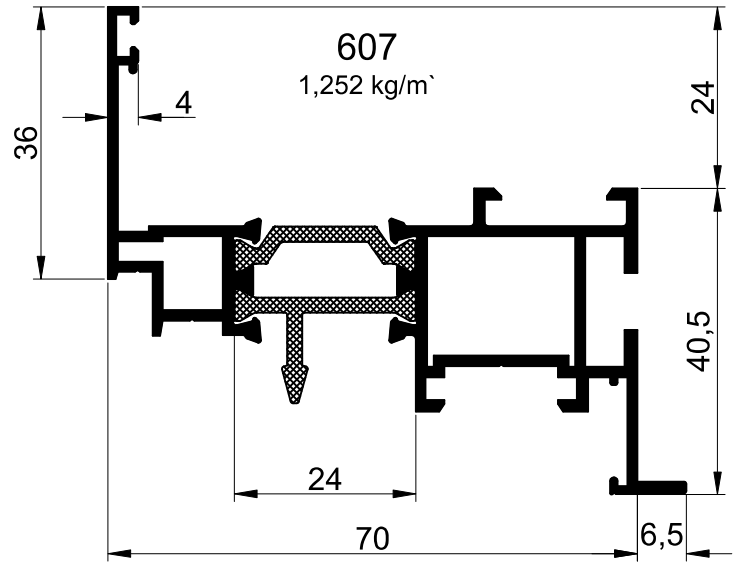
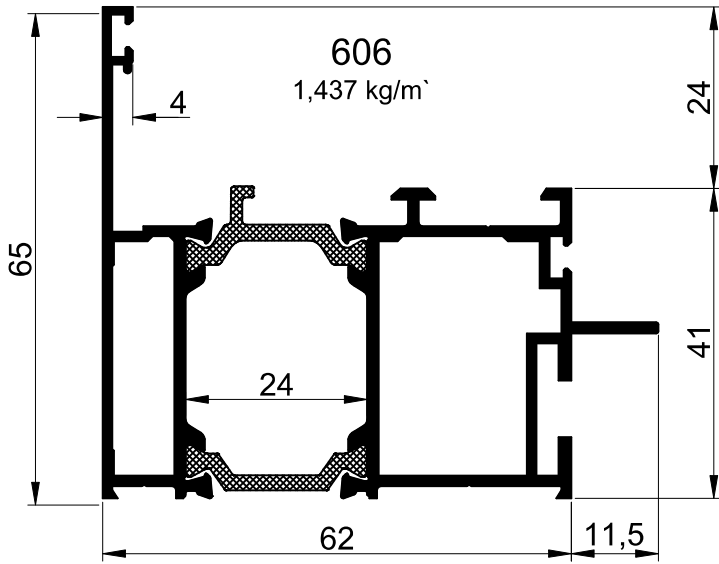


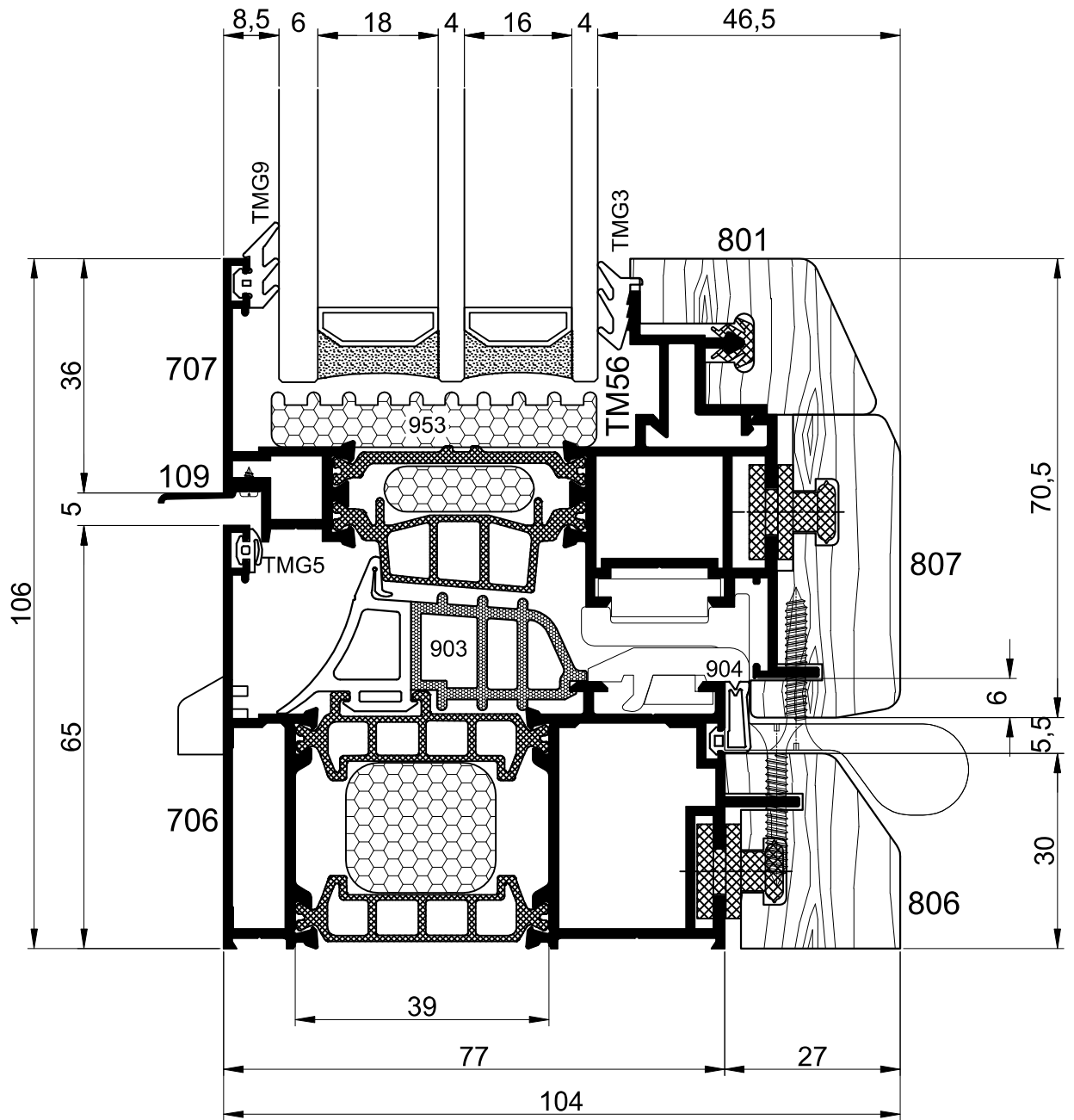


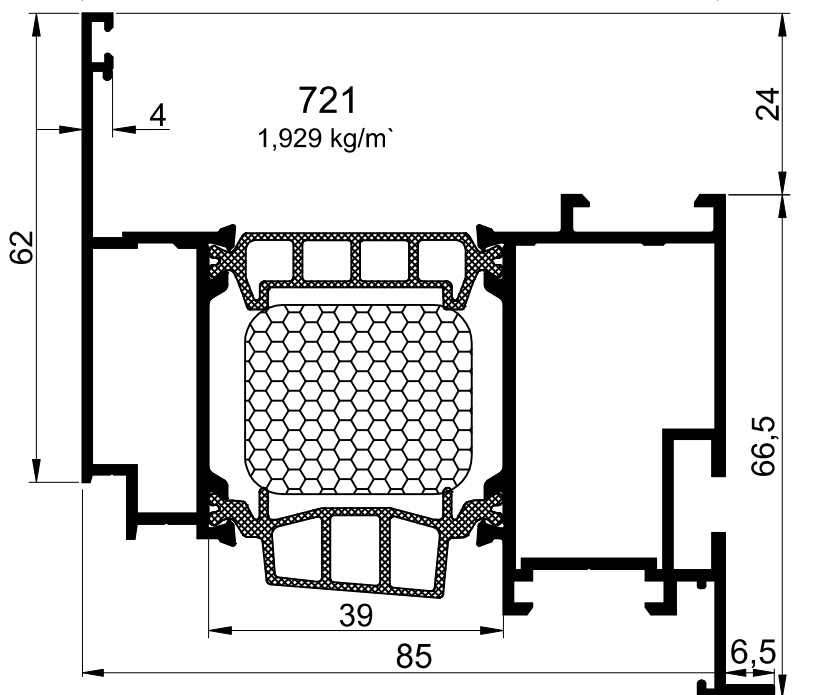
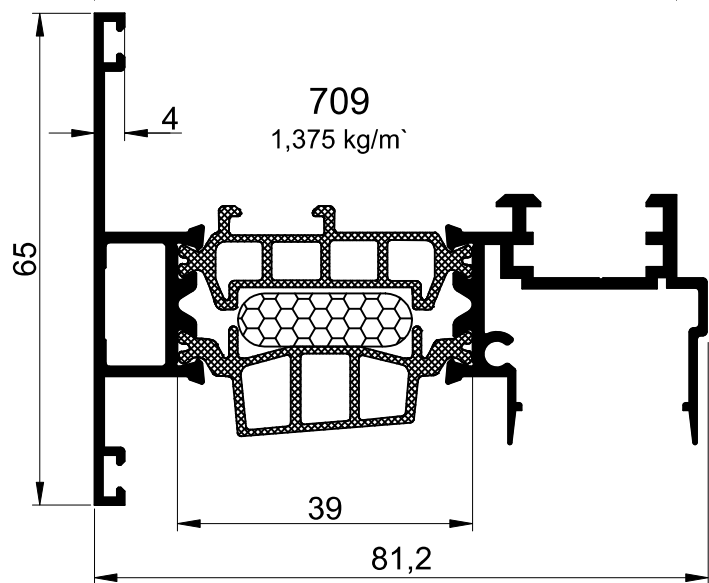
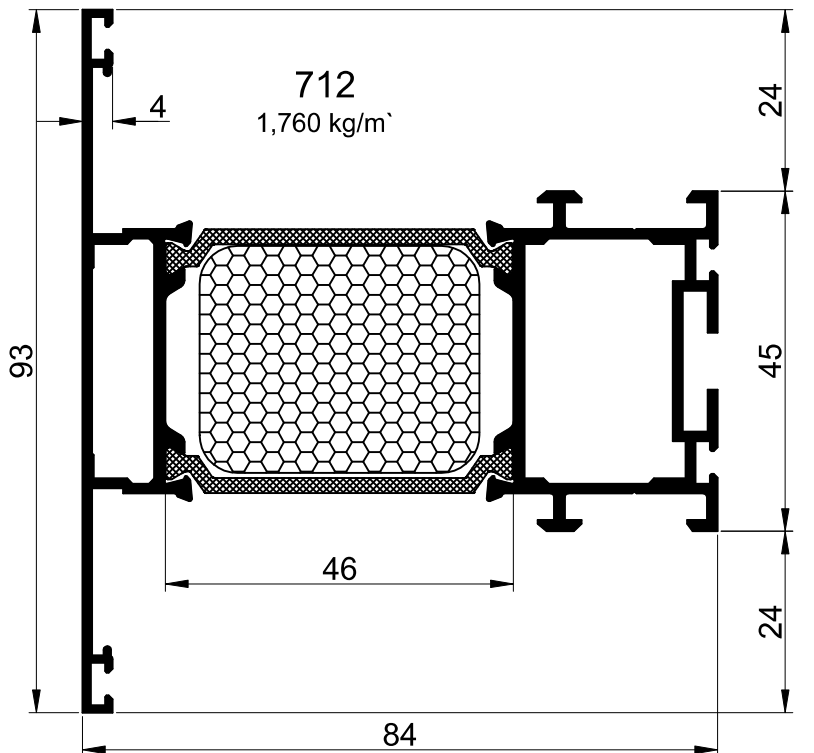
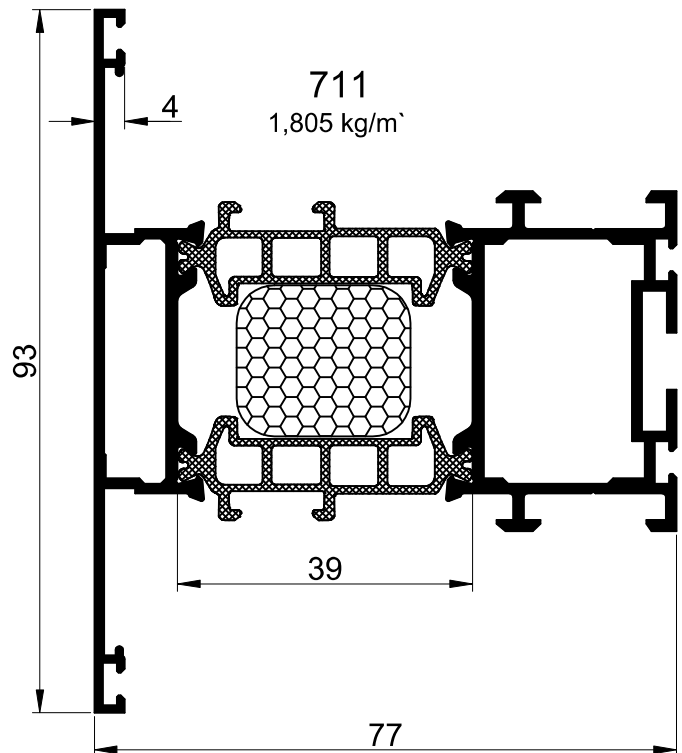
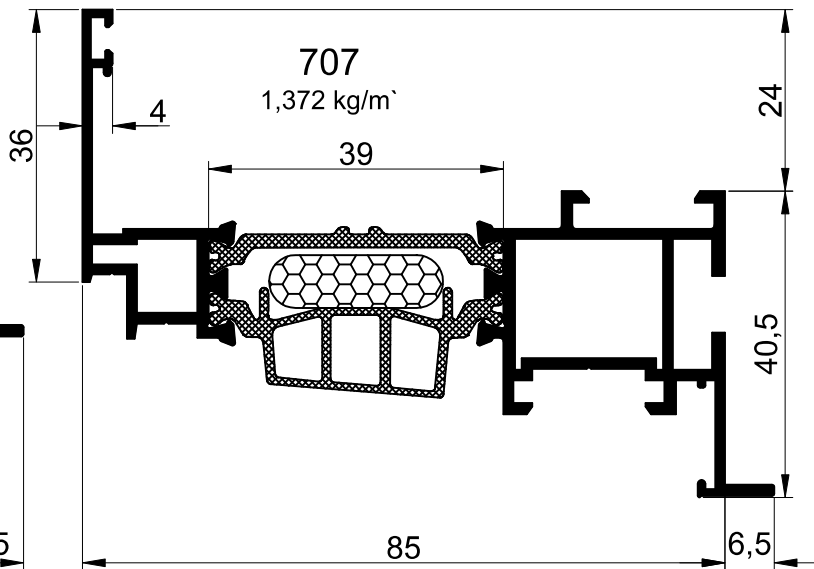
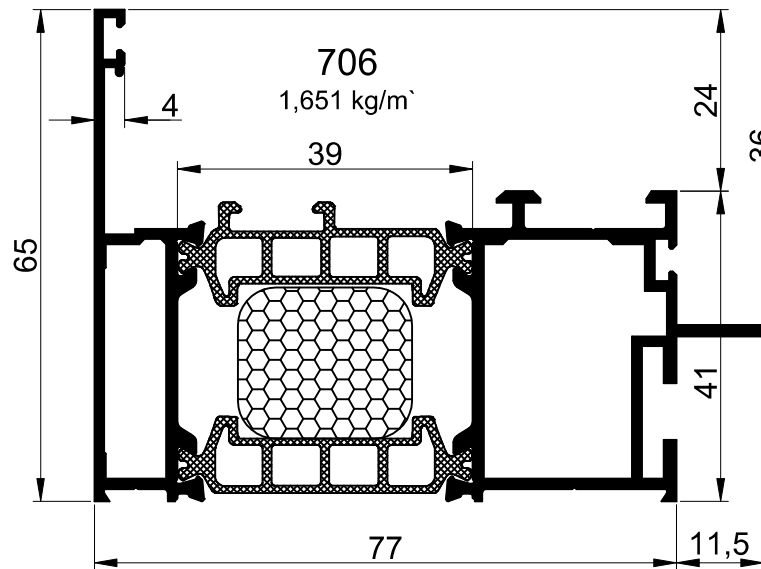


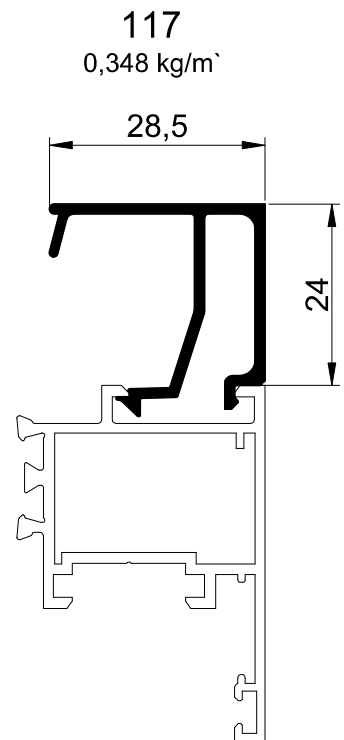
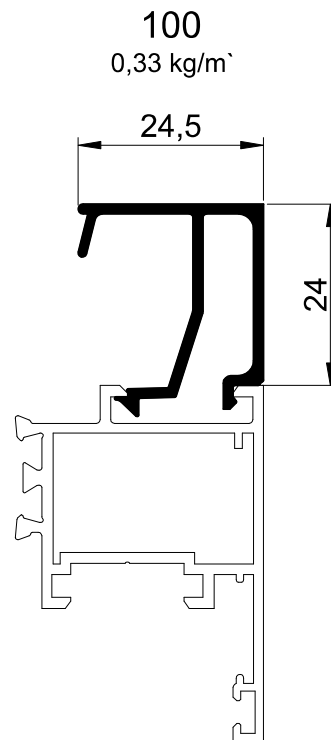
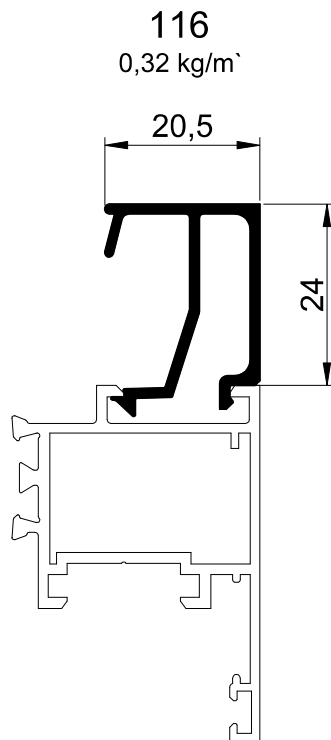
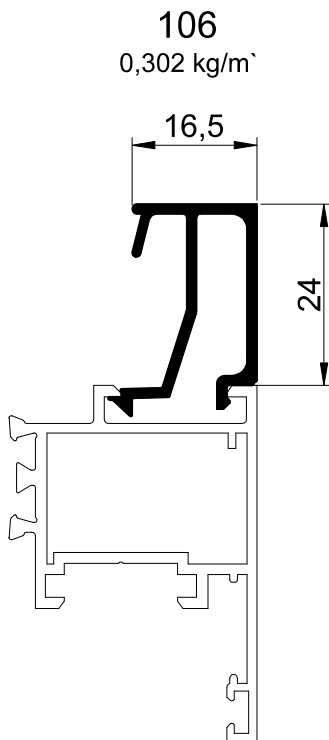
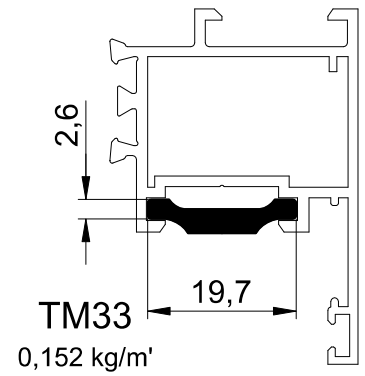
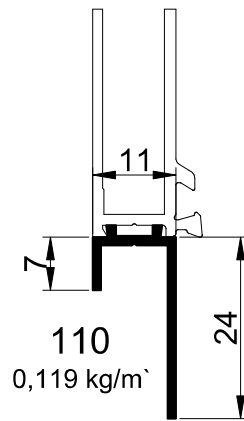
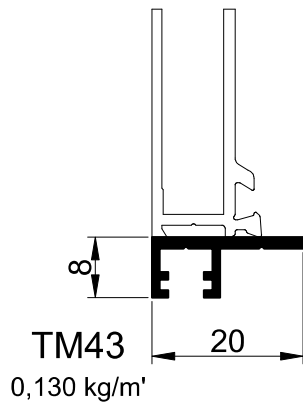
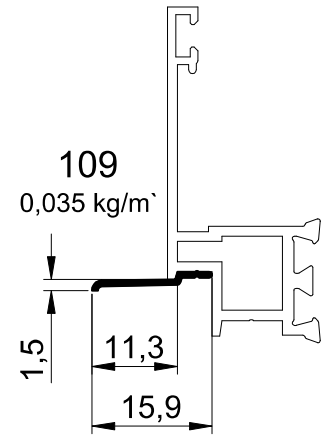
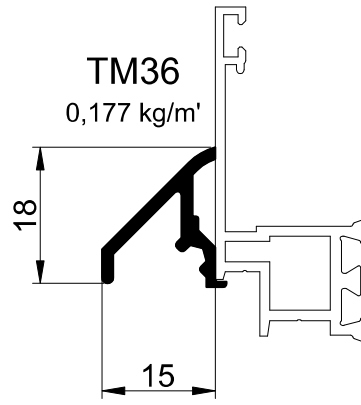
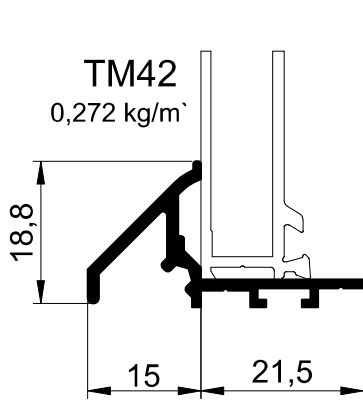


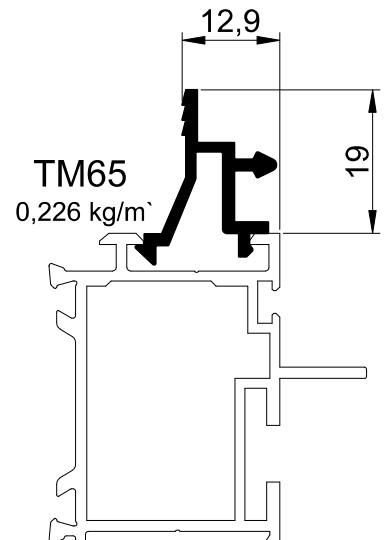
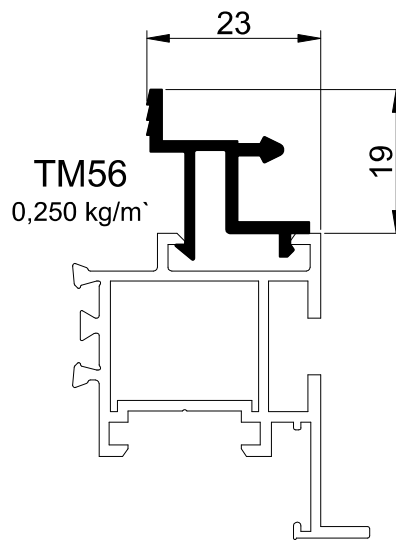
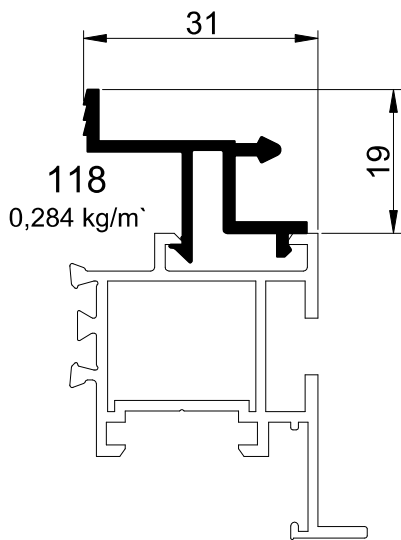
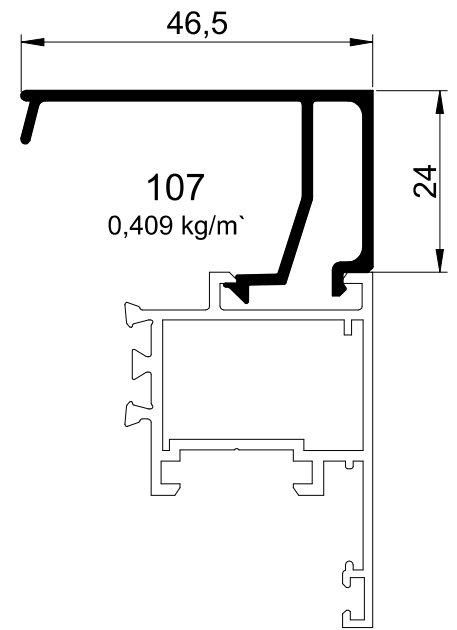
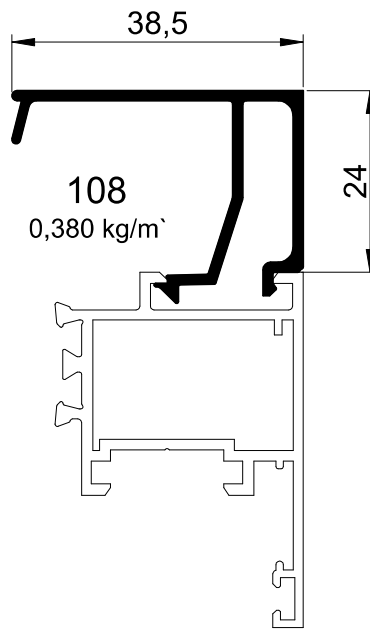
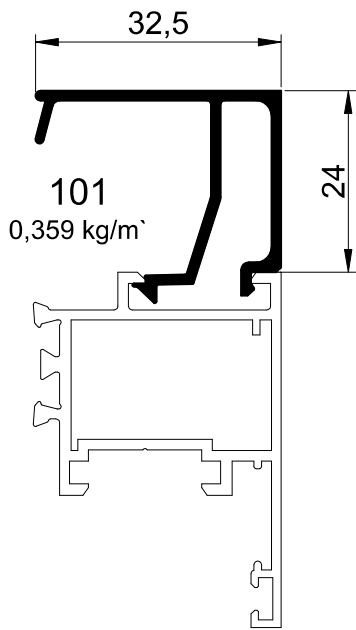




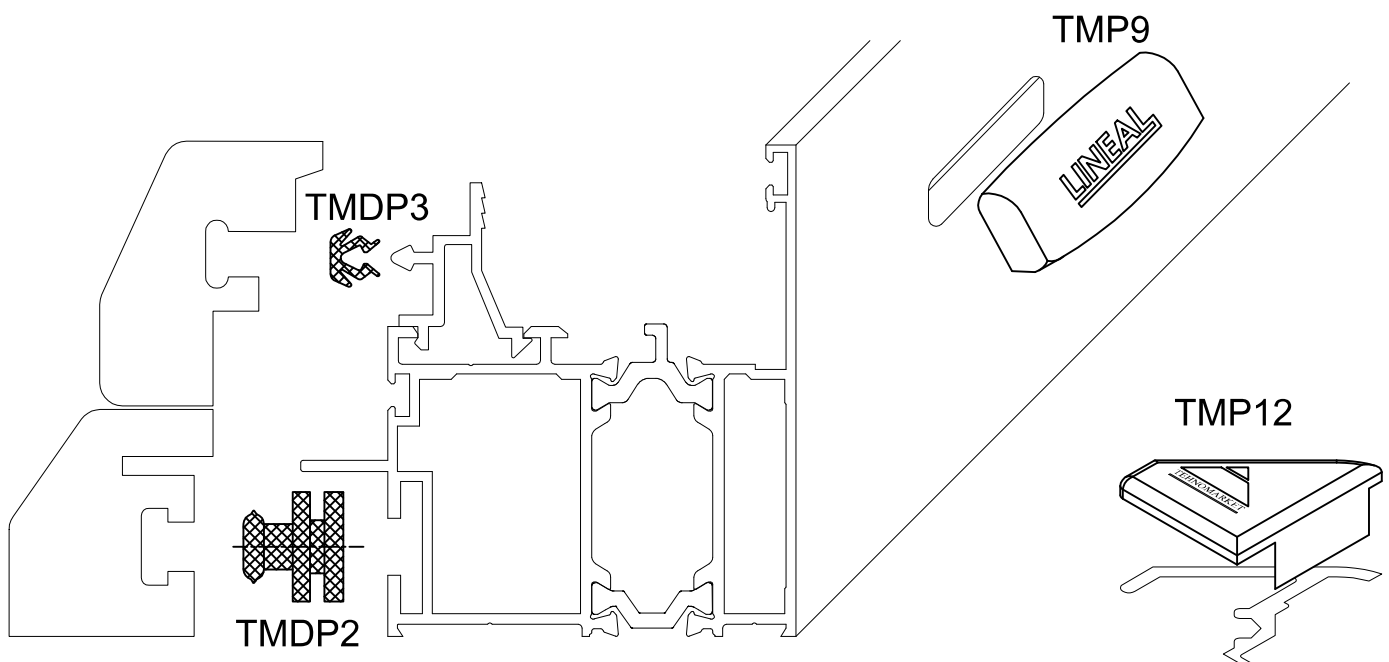


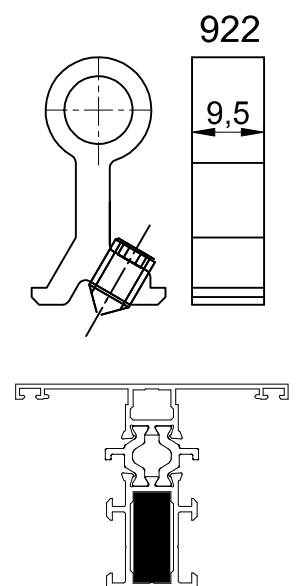
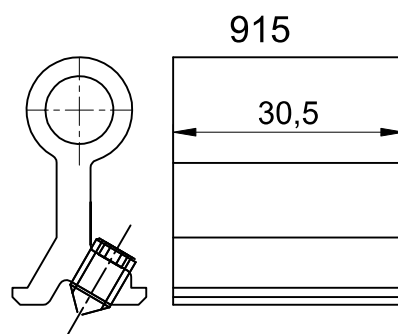
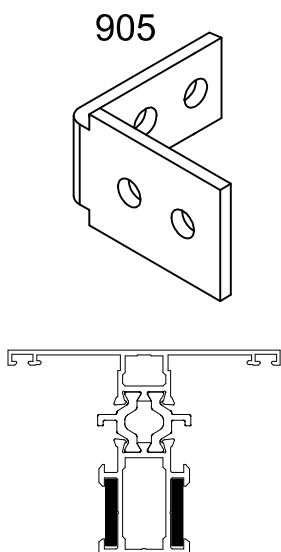
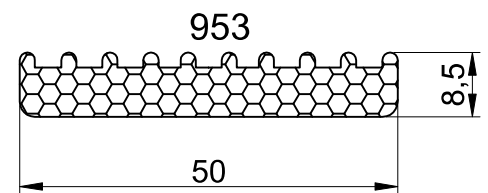
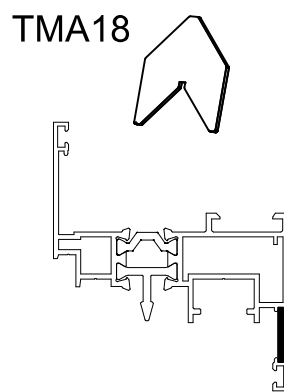
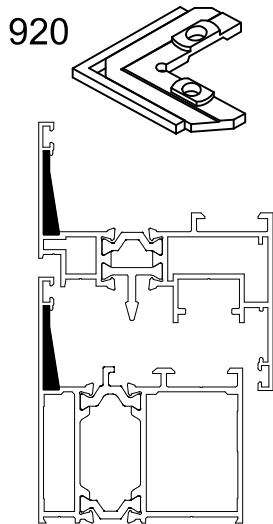
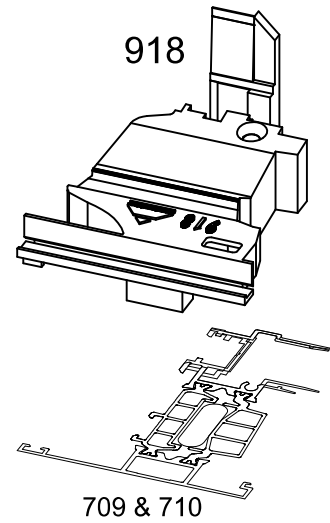
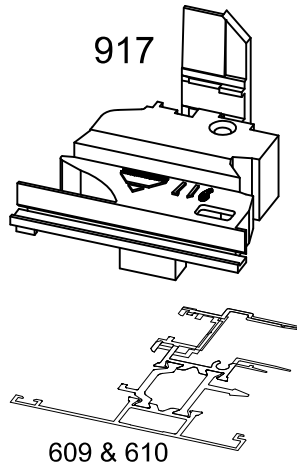
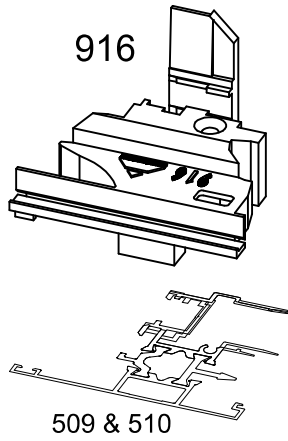




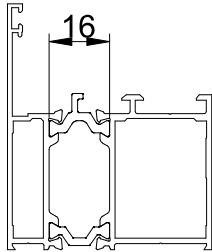
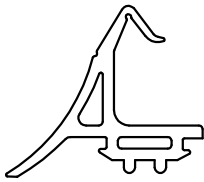


Lista pratećeg materijala
Accessories list
Список аксессуаров

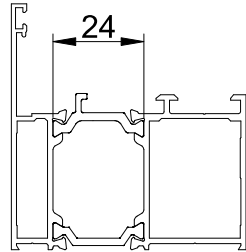
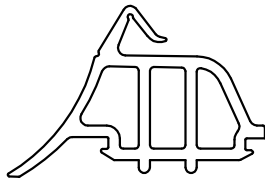




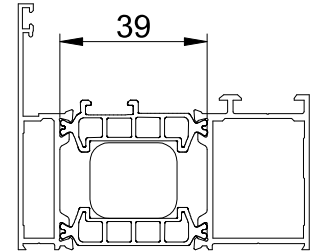
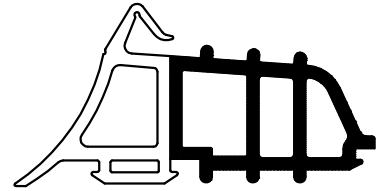
901



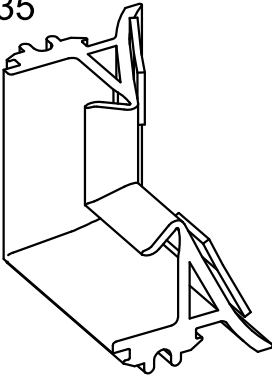
902



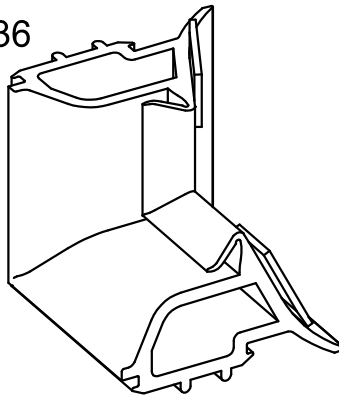
903



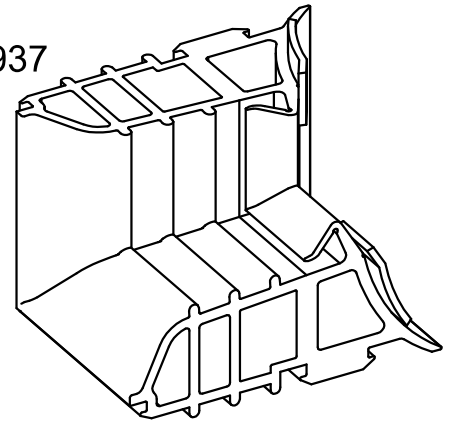
935



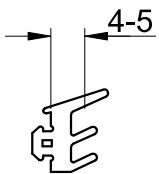
936



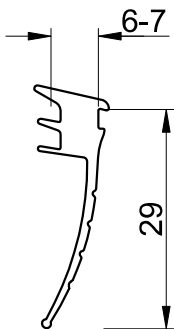
937



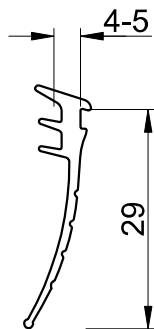
TMG9



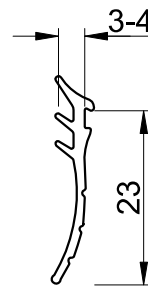
938



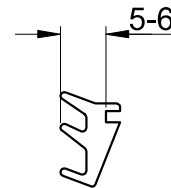
921



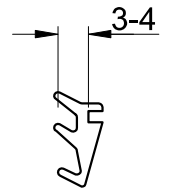
TMTG5



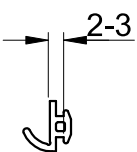
TMG3



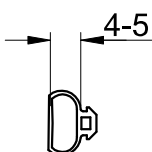
TMG2



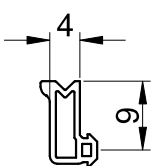
TMG5



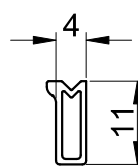
TMG6



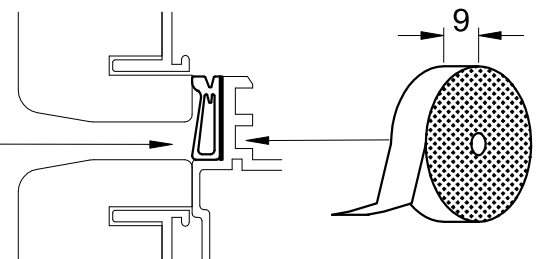
904

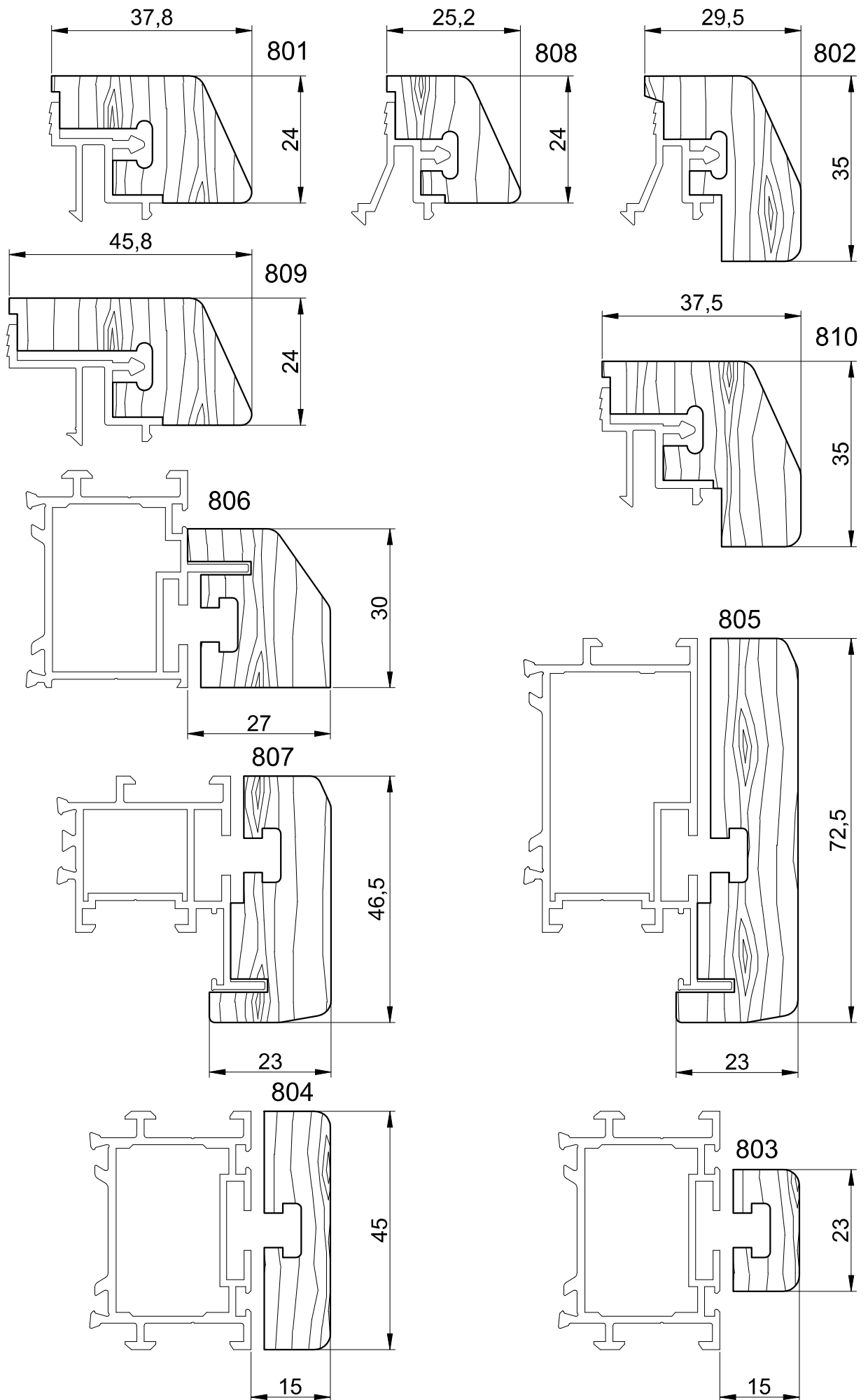


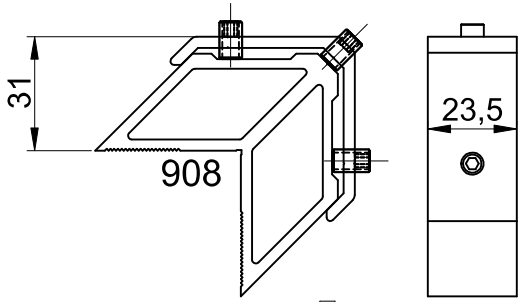
919



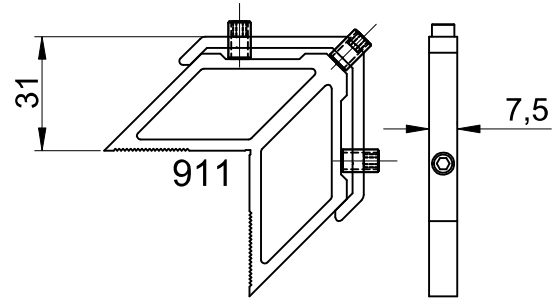
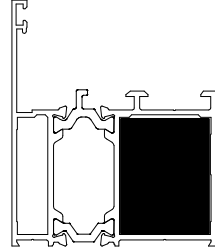
3M™ VHB™
4910F



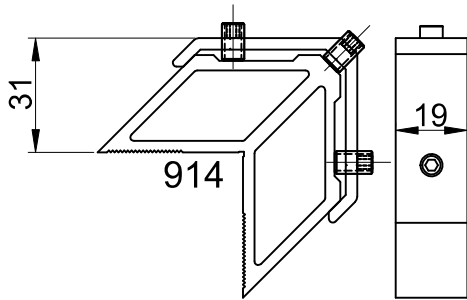
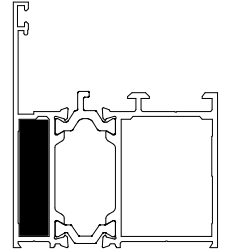




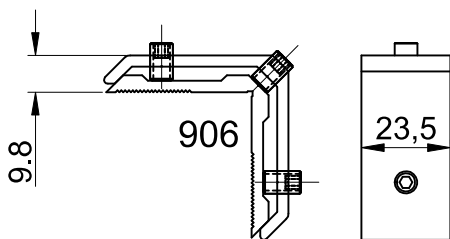
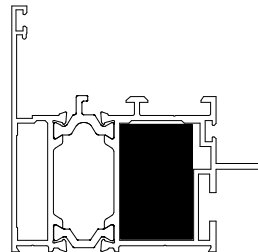
501-601-701
517-617-717



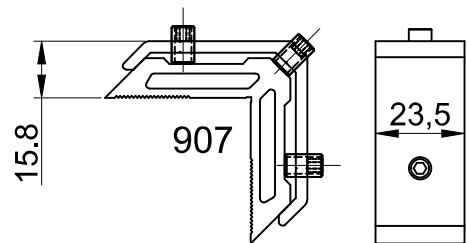
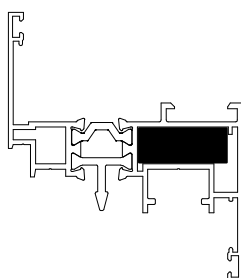
501-601-701
506-507-508
517-617-717



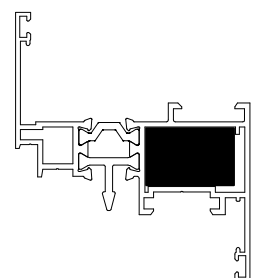
506-606-706

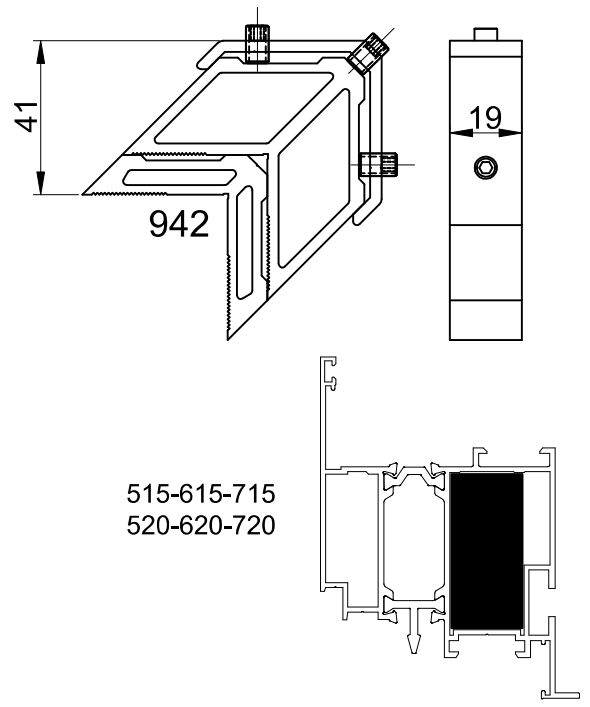
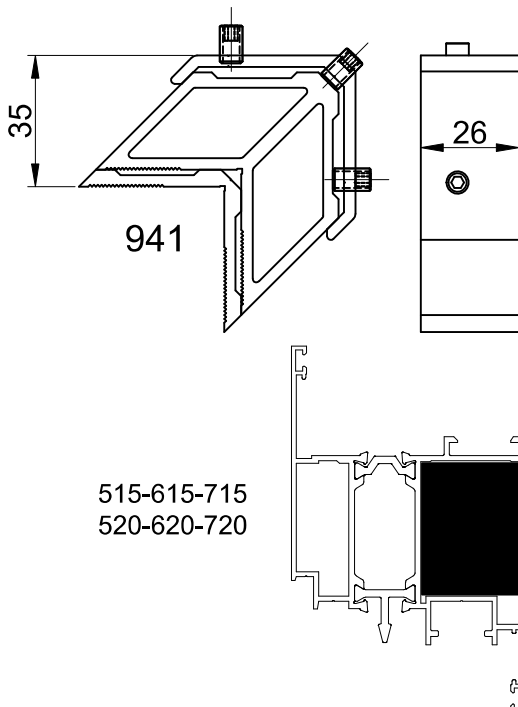
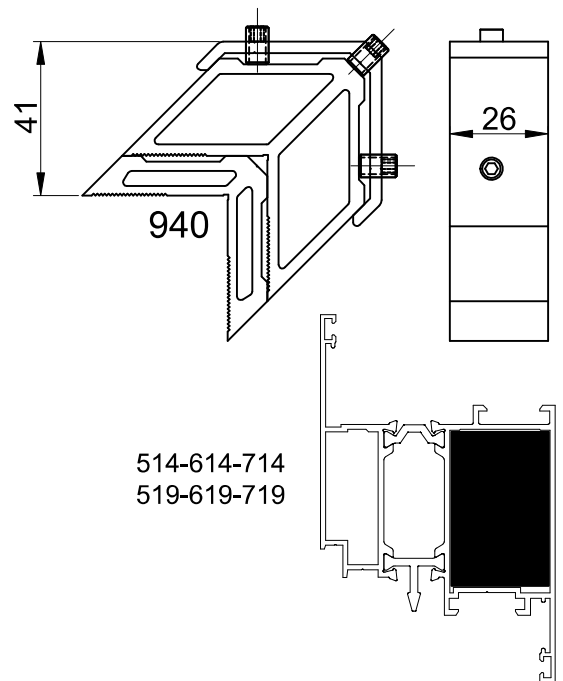
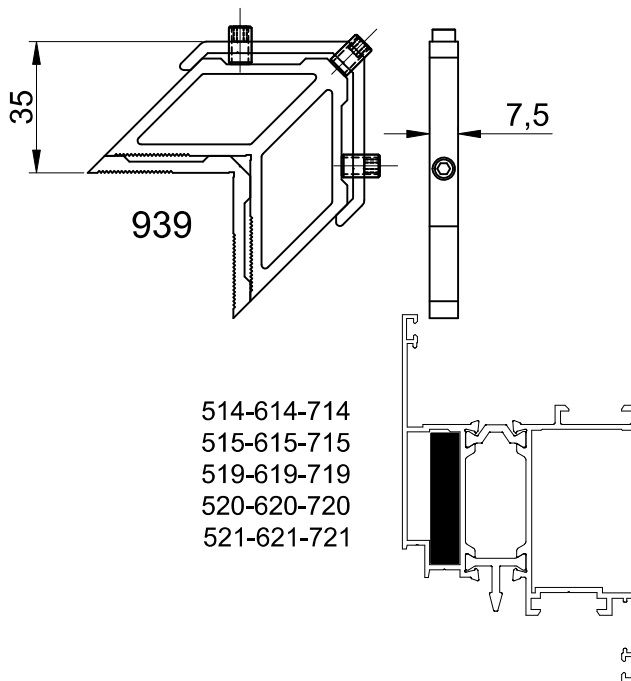
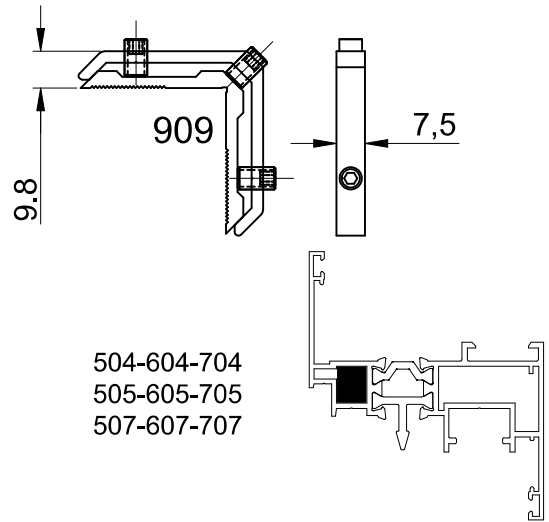
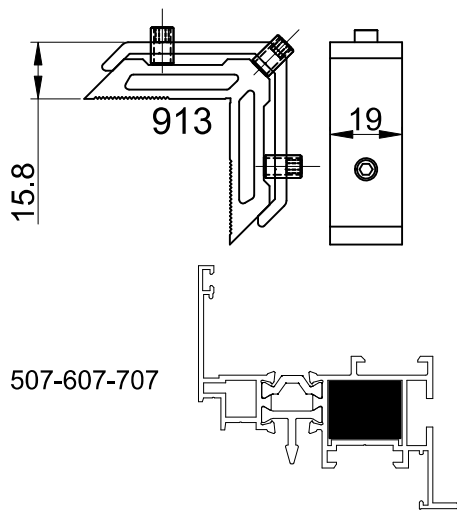


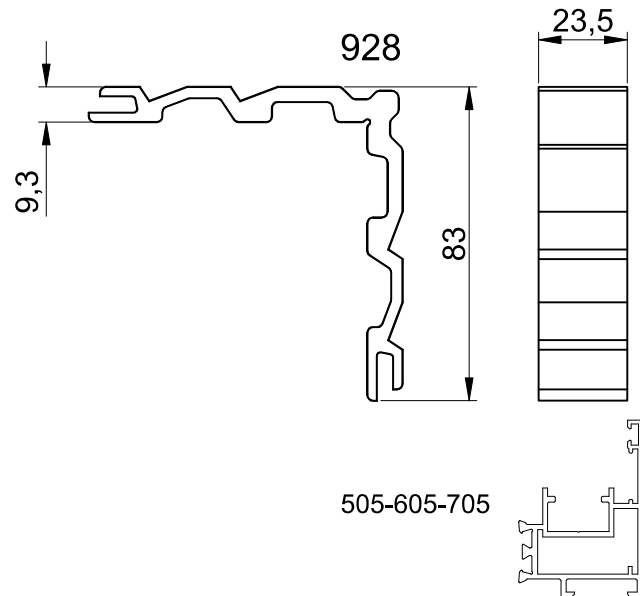
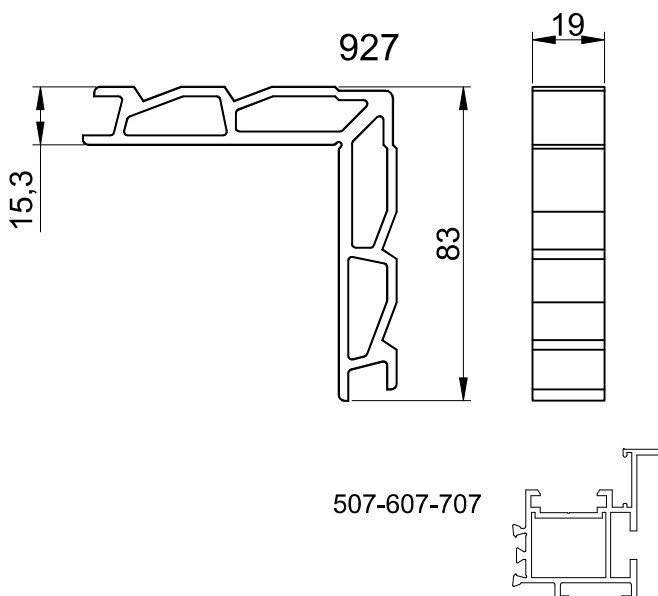
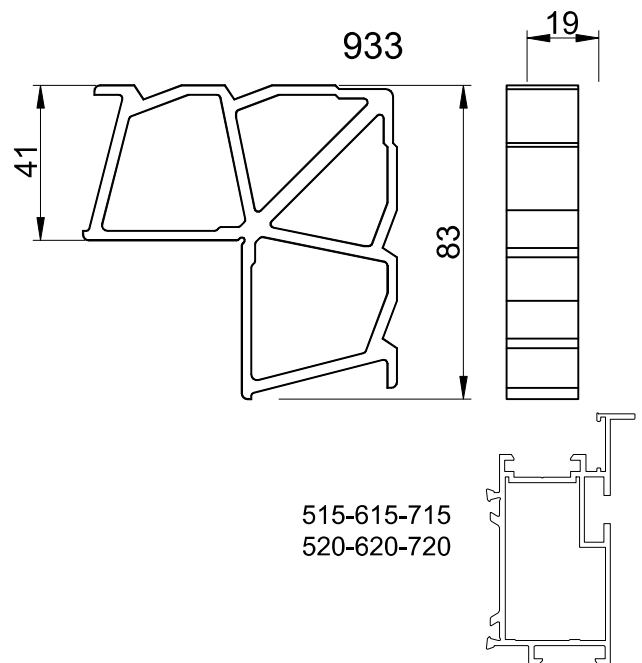
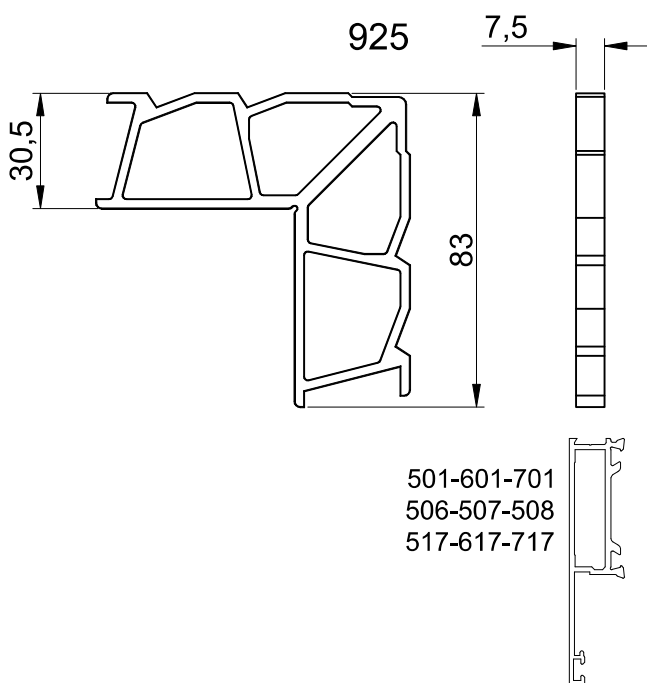
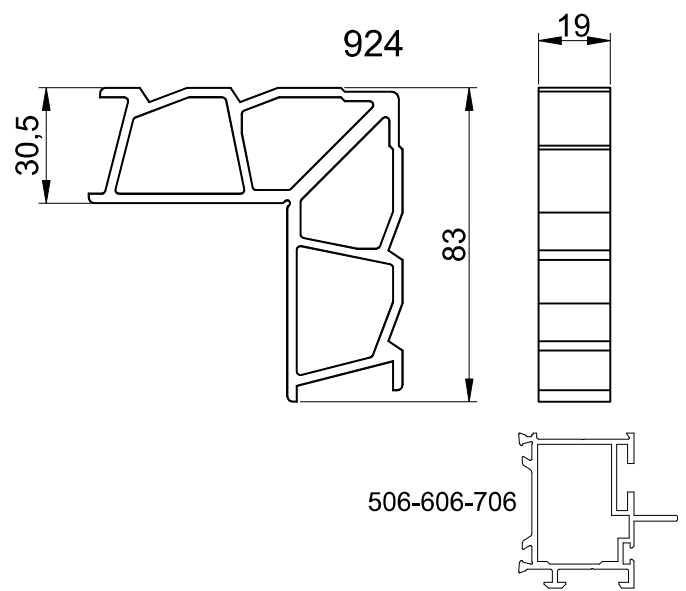
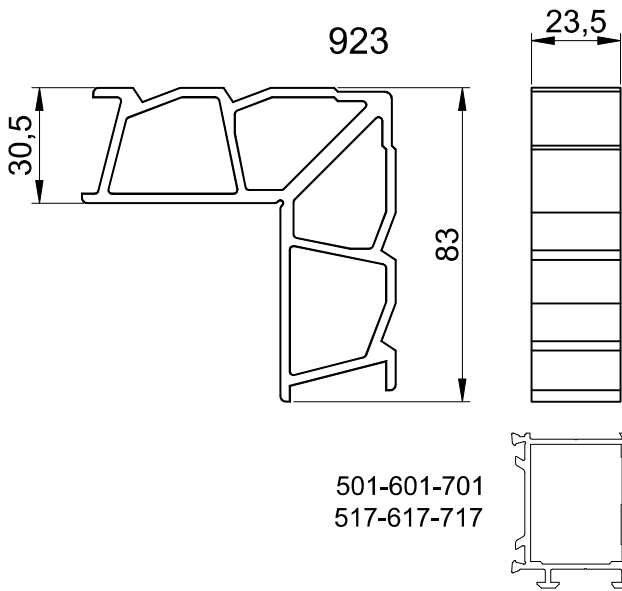
505-605-705

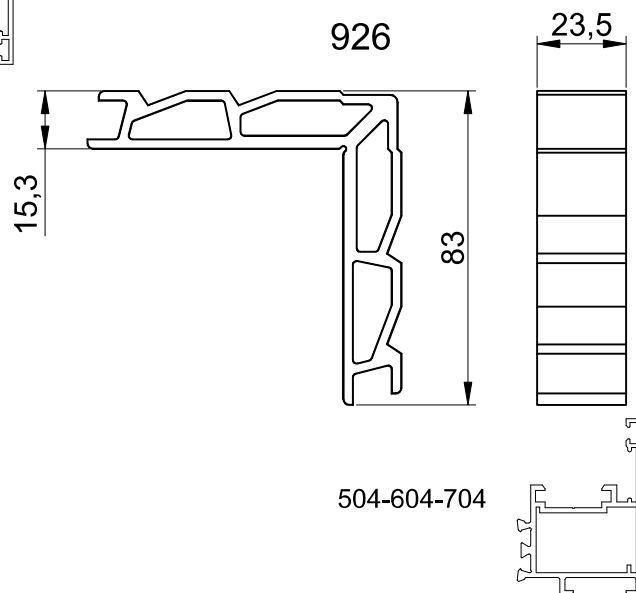
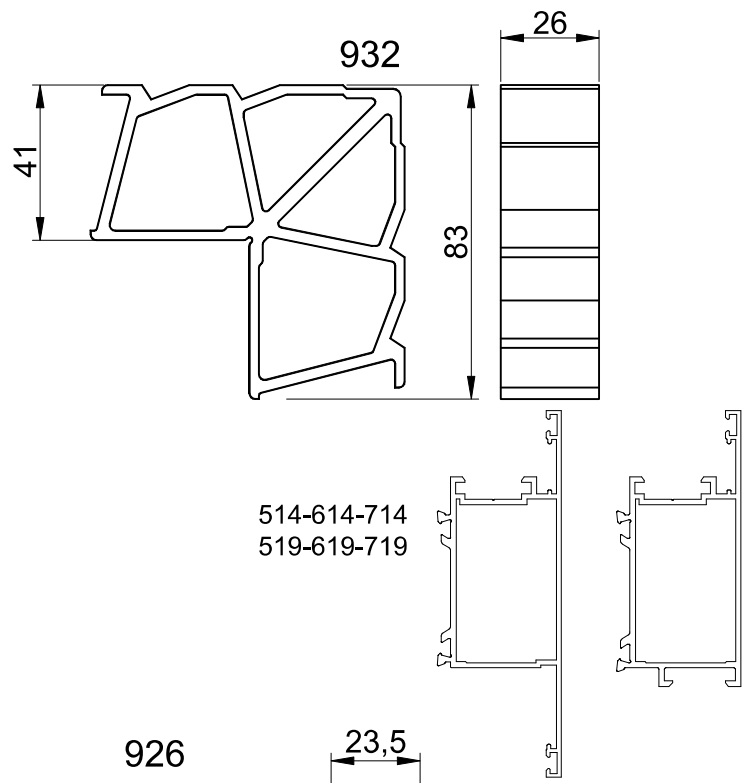
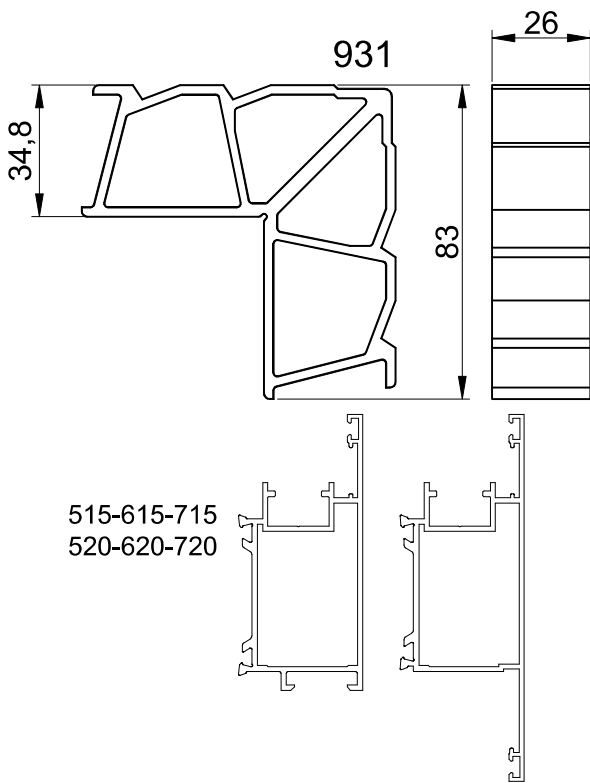
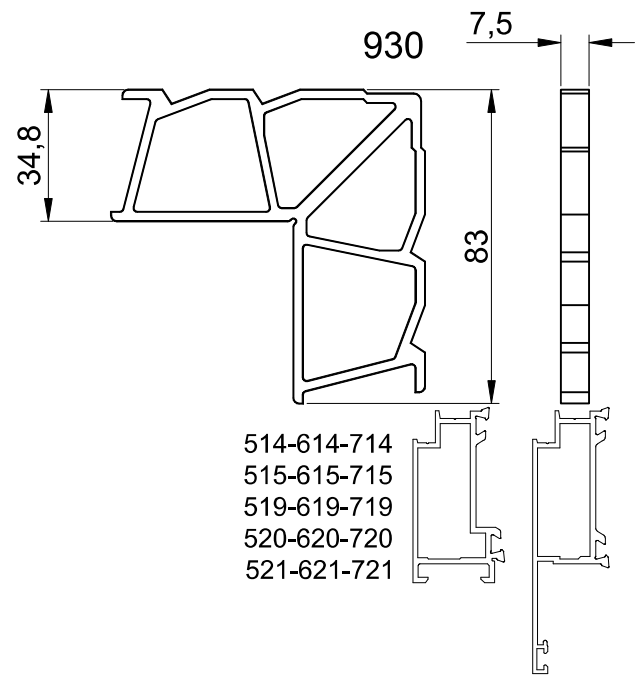
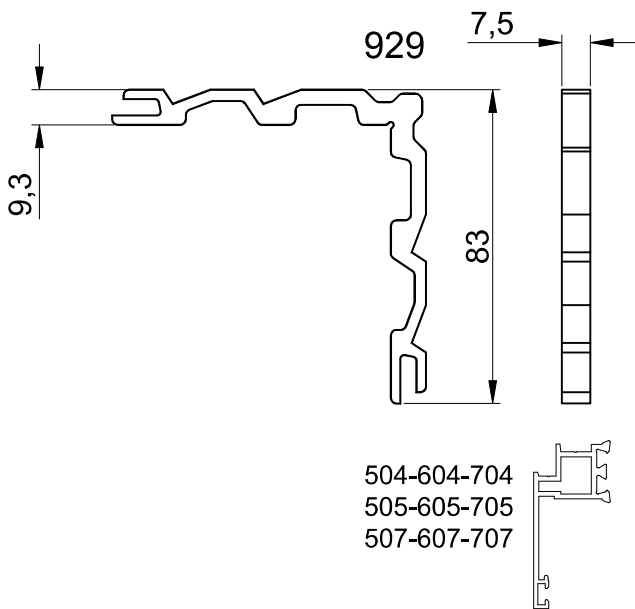


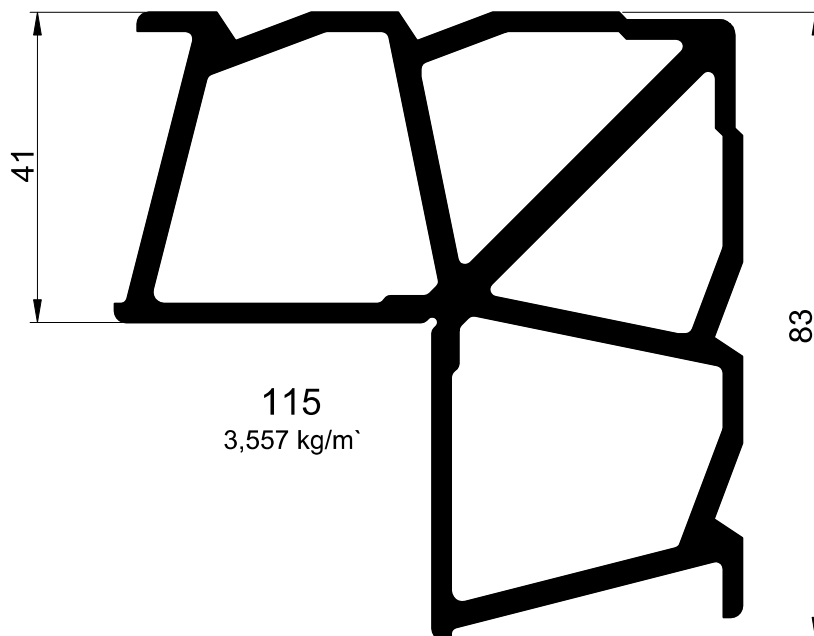
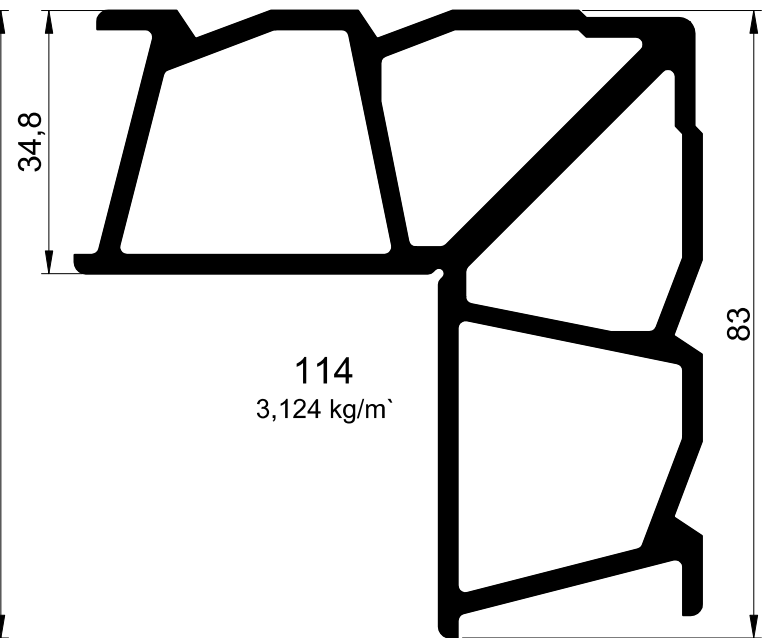
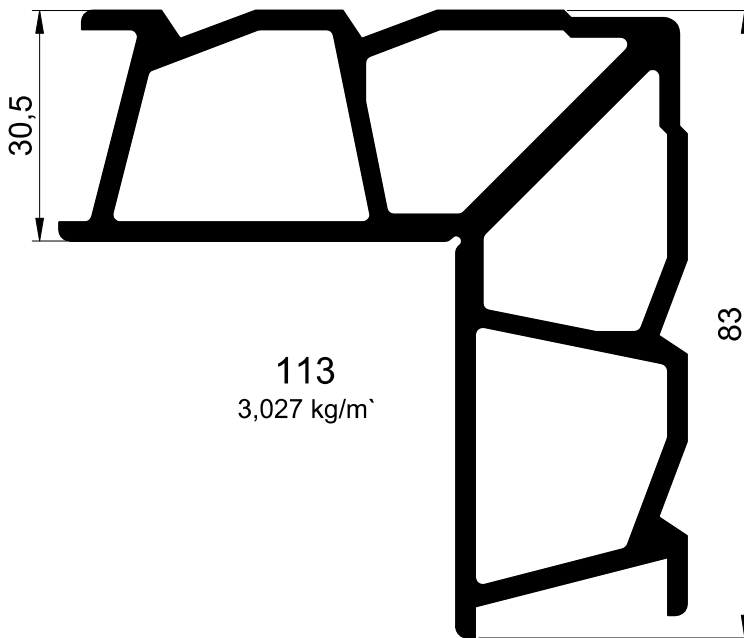
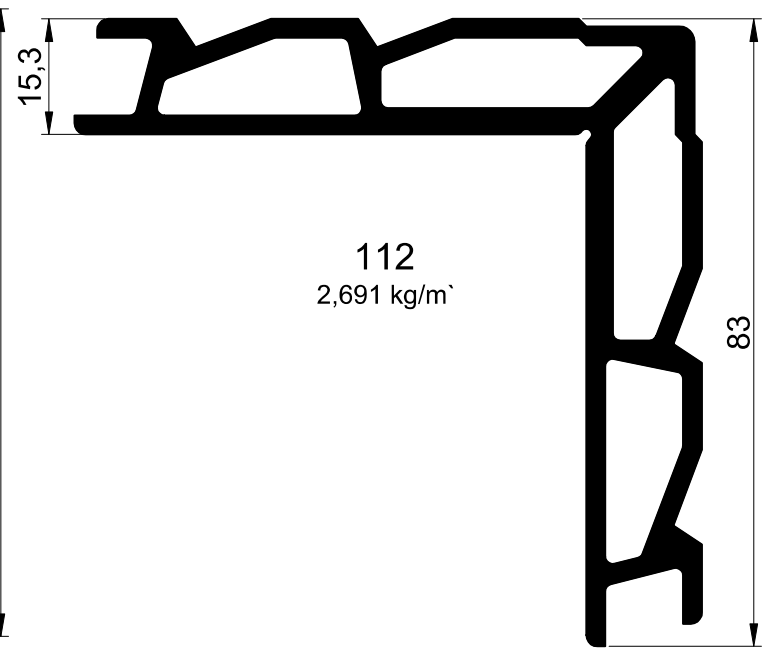
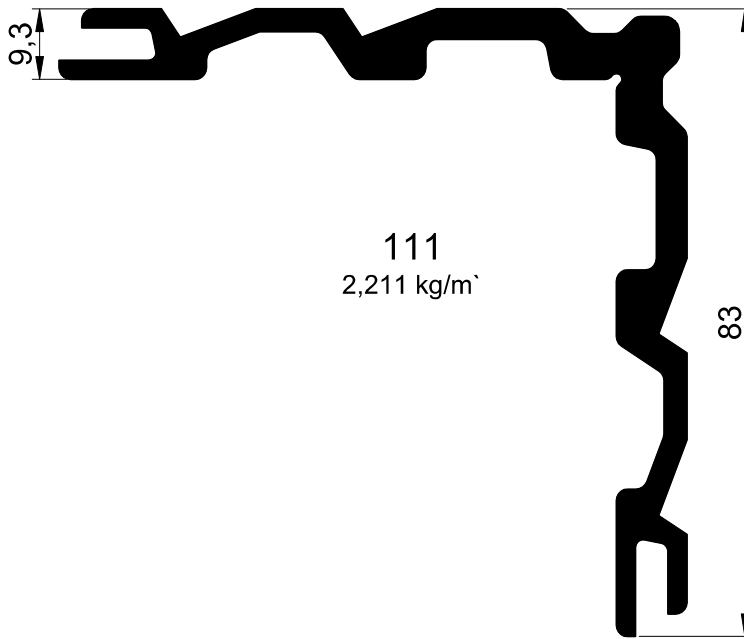
504-604-704



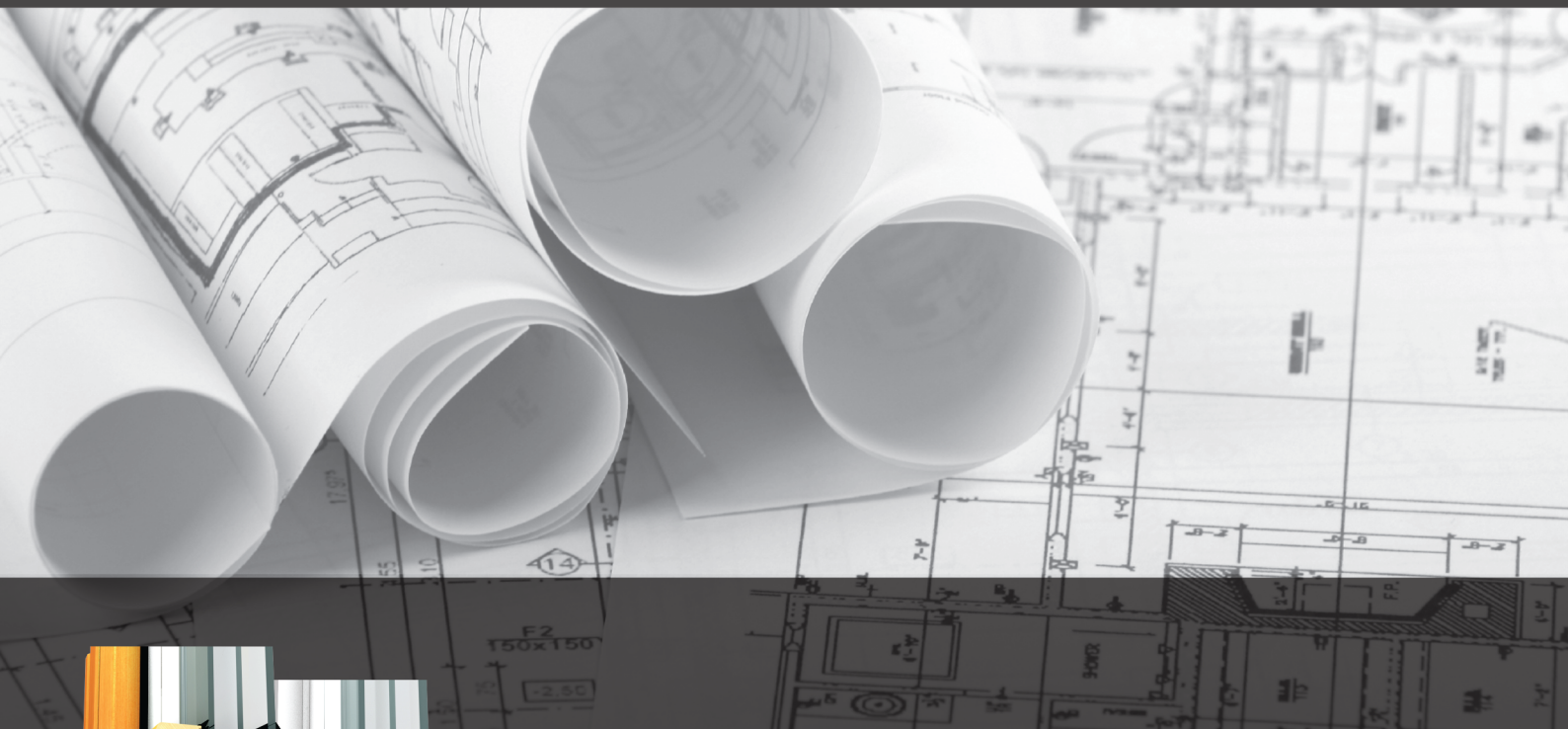








LINEAL



BUDUĆNOST ENERGETSKE EFIKASNOSTI
THE FUTURE OF ENERGY EFFICIENCY
БУДУЩЕЕ ЭНЕРГОЭФФЕКТИВНОСТИ

UPРАВNA ZGRADA
HEADQUARTERS
ГЛАВНЫЙ ОФИС

Skadarska 73
26 000 Pančevo
Srbija
Tel: +381 13 307 700
Fax: +381 13 307 799
E-mail: plasman@tehnmarket.com

FABRIKA ZA EKSTRUZIJU
EXTRUSION PLANT
ЗАВОД ПО ЭКСТРУЗИИ АЛЮМИНИЯ

Jabučki put 221
26 000 Pančevo
Srbija
Tel: +381 13 334 507
Fax: +381 13 377 564
E-mail: profil@tehnmarket.com

www.tehnmarket.com

